

2018 Township Map and Information Guide



Limerick Township

MONTGOMERY COUNTY • PENNSYLVANIA

646 W. RIDGE PIKE • LIMERICK, PA 19468
610-495-6432 • LIMERICKPA.ORG

About this Map and Guide

A Message from the Board of Supervisors

Dear Residents and Friends of Limerick Township,

The Board of Supervisors is pleased to provide you with this map of our wonderful community. Founded in 1726, our Township has been “home” to generations – mixing life-long residents and transplants from far and near. Combined with our business community, our residents make Limerick a great place to call home.

This Community Map provides information about basic organizational and administrative structure of our community. Its intent is to outline the history and recreational opportunities, and provide other insight about our fine community.

We encourage the reader to review and understand this information as a visitor, neighbor, resident or business owner. Your involvement in activities and attendance at Township meetings and Special Community Events is greatly encouraged. Our

community, as many others, depends on volunteers that serve on Township Committees, Boards, and Commissions, and we encourage those who wish to serve to step forward and offer their time and talents.

Thank you to the businesses which appear on the map; their sponsorship has paid for this publication and ask that you support and utilize their services.

Board of Supervisors,

D. Elaine DeWan

Patrick M. Morrone

Thomas J. Neafcy, Jr.

Kara Shuler

Kenneth W. Sperring, Jr.

Parks and Recreation



TOWNSHIP PARKS

- **Limerick Community Park** - Swamp Pike and Ziegler Road
 - Manderach Playground - Located within the Limerick Community Park
- **Veterans Park** - Ridge Pike located next to the Township Building
- **Linfield Sports Park** - Longview Road, Linfield
- **Trinley River Park** - Railroad Street and Trinley Road, Linfield
- **Kurylo Preserve** - N. Limerick Road and Pheasant Road

To view additional park and rental information please visit the Parks and Recreation Page at www.limerickpa.org

PROGRAMMING

Limerick Township provides recreation programs for every age group, every season of the year. Please visit our website at www.limerickpa.org and refer to the Parks & Recreation links.

Spotted Lanternfly Information

What is a Spotted Lanternfly?

Is an invasive plant hopper, that is a threat to Pennsylvania and the United States. The Spotted Lanternfly attacks many hosts including the Tree of Heaven, grape vines, apples, stone fruits, and pine trees.

Life Cycle

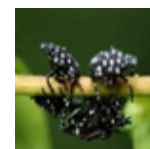
October-November: Begin laying eggs
Late April-Early May: Eggs begin to hatch
Early May-July: Immature Stage
July-December: Reach adulthood

What to look for?

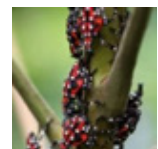
Spotted Lanternflies will lay eggs on any smooth surface of any tree or around trees starting in the fall. Eggs have been found under flat stones, outdoor furniture, vehicles and structures.



October-April



Late April-Early May



Mid May-July



What to do when you find a Spotted Lanternfly

- If you find a Spotted Lanternfly in a municipality where it is known to exist you should try and kill it.
- If you see egg masses, scrape them off, double bag them and throw them away. You can also place the eggs into alcohol or hand sanitizer to kill them.
- Newly laid egg masses have a grey mud-like covering which can take on a dry cracked appearance over time. Old egg masses appear as rows of 30-50 brownish seed-like deposits in 4-7 columns on the trunk, roughly an inch long.
- Report all destroyed egg masses on the Pennsylvania Agriculture website.

Prevention of Spreading

- Inspect trees with smooth bark, the area around the trees, and yard waste. Other areas to inspect include rusted metal surfaces, boats, ATV's, sheds, and play equipment outside.
- Avoid parking your vehicle under trees because spotted lanternflies that are living in trees will lay eggs on the cars underneath
- Treat the Tree of Heaven with a herbicide. Please follow the directions to prevent harm to neighboring plants.

For more information on prevention please visit the Pennsylvania Agriculture and Penn State Extension websites
www.agriculture.pa.gov
www.extension.psu.edu



Trinley River Park



Kurylo Preserve



Veterans Park



Linfield Sports Park

Miscellaneous Contact Information

Spring-Ford Chamber of Commerce

313 W. Ridge Pike, 2nd floor • Limerick, PA 19468
Phone: (610) 489-7200 • Fax: (610) 454-0059
www.springfordchamber.com

Tri-County Chamber of Commerce

152 E. High Street, Suite 360 • Pottstown, PA 19464
Phone: (610) 326-2900 • Fax: (610) 970-9705
www.tricountyareachamber.com

Limerick Township Historical Society

545 W. Ridge Pike • Limerick, PA 19468
(610) 495-5229
www.limerickpahistory.org

District Justice - Richard H. Welsh Magisterial District No. 38-1-19

497 W. Ridge Pike • Limerick, PA 19468
Phone: (610) 495-8440 • Fax: (610) 495-8442
Email: DC38119@montcopa.org

State Police - Skippack Station

2047 Bridge Road • Schwenksville, PA 19473
Phone: (610) 584-1250
www.psp.state.pa.us

Federal Criminal Fingerprinting Clearance - Identgo

292 W. Ridge Pike, Bldg C, Ste 101 • Limerick, PA 19468
(610) 409-0990
www.identgo.com/locations/pennsylvania

Limerick Post Office

327 W Ridge Pike • Royersford, PA 19468
Phone: (610) 831-5604
www.usps.com

Royersford Post Office

354 N. Lewis Road • Royersford, PA 19468
Phone: (610) 792-4758
www.usps.com

Schwenksville Post Office

153 Centennial Street • Schwenksville, PA 19473
Phone: (610) 287-3551
www.usps.com

Spring-Ford School District Administration Building

857 S Lewis Road • Royersford, PA 19468
Phone: (610) 705-6000
www.spring-ford.net

Royersford Free Public Library

200 South 4th Avenue • Royersford, PA 19468
(610) 948-7277
www.mc-npl.org/general/branchesroy.html

Social Security Office

39 W. Ridge Pike • Royersford, PA 19468
(800) 772-1213

Limerick Township Police Department

The Limerick Township Police Department was founded in May of 1965 when the Board of Supervisors appointed 6 part-time officers to patrol the Township's 22.6 square miles between the hours of 7:00 A.M. and 1:00 A.M. Tuesday through Saturday.

Today the Department has a 4.9-million-dollar operating budget with 30 full-time officers and 4 civilian employees. The members apply the Departments core values of Honor, Integrity, and Professionalism to provide contemporary police services to the Township's residential and business communities.

The foundation of the Police Department led by a Patrol Lieutenant overseeing a command of 4 patrol platoons. Those platoons are led by a Patrol Sergeant overseeing a Patrol Corporal and 3 Patrol Officers. These members work 12 hour rotating shifts consisting of two weeks of day work followed by two weeks of night shift. Investigative services are led by a Detective Sergeant who oversees 3 Detectives. Supporting patrol are 2 Patrol Officers working a power shift to address the rise in retail crime that the Township has experienced in recent years. Clerical and staff services are provided by 3.5 civilian employees. Administrative duties are performed by the department head who is the Chief of Police

Police Related Questions? The non-emergency number for the Limerick Township Police Department is (610) 495-7909



EMERGENCIES - Dial 911

Local Organizations

AMBULANCE SERVICE

Trappe Fire and Ambulance Company No. 1

20 W. 5th Ave
Trappe, PA 19426
Phone: (610) 489-2700
www.trappefire.org

Friendship Ambulance and Rescue

269 Green Street
Royersford, PA 19468
Phone: (610) 948-6234
www.frc85.org

Lower Frederick Regional Ambulance Corp.

53 Spring Mount Road
Spring Mount, PA 19478
Phone: (610) 287-1328
www.lfrac.org

Goodwill Ambulance

714 E High Street
Pottstown, PA 19464
Phone: (610) 970-0878
www.goodwillpottstown.org

AMERICAN RED CROSS

2221 Chestnut Street
Philadelphia, PA 19103
Phone: (215) 299-4000
www.redcross.org

HEALTH DEPARTMENT

Montgomery County Health Department

364 King Street
Pottstown, PA 19464
Phone: (610) 970-5040
health.montcopa.org

FIRE

Limerick Fire Department

www.LFD51.org

Limerick Fire Station

390 W. Ridge Pike
Limerick, PA 19468
Phone: (610) 489-2222

Linfield Fire Station

1077 Main Street
Linfield, PA 19468
(610) 495-7561

MEDICAL CENTER

Pottstown Hospital-Tower Health

1600 E. High Street
Pottstown, PA 19464
Phone: (610) 327-7000
pottstown.towerhealth.org

Limerick Township Yard & Leaf Collection Options



Township Drop Off Site

180 Swamp Pike
Royersford, PA 19468

- **First Monday of each month
8:00 AM – Noon**

- **Leaves and small sticks, does not accept grass clippings**



Hetrick Gardens

2620 Swamp Pike
Pottstown, PA 19464

- **No Charge to Limerick Residents (Residential only)**

- **Accepts Most Types of Yard Waste, from grass clippings to tree limbs and small stumps**

Private Trash Haulers

currently operating in
Limerick Township

- **Curbside pickup from your privately contracted trash hauler**

- **Each hauler is required by Limerick to pick up yard & leaf waste four(4) times a year**



As per Limerick Township Ordinance No. 377, the hours of operation for municipal waste collectors or haulers is:

- 7:00 A.M. to 8:00 P.M. Monday through Friday
- 8:00 A.M. to 6:00 P.M. on Saturday and Sunday

Any collections, as referenced above, performed outside of these hours will be considered a violation. Residents should call the Limerick Township Police Department at 610-495-7909 as violations of collection times are occurring.

About Limerick Township

Limerick Township was incorporated in 1726 and is the second largest municipality (22.6+ square miles) in Montgomery County. The current population, according to the 2010 Census, is 18,074 which represents a 33.5% increase from 2000. Significant growth has occurred since the 2010 Census and accurate population numbers are important in terms of Federal and State grants and funding available to the township. We encourage everyone to participate in the upcoming 2020 Census. Look for information in 2019 from the U.S. Census Bureau detailing the need for your participation.

Limerick Township is home to Heritage Field Airport, Exelon's Limerick Generating Station, Philadelphia Premium Outlets, and many other commercial and industrial businesses. It is accessible from three interchanges of PA State Route 422 and is situated between Philadelphia and Reading. Philadelphia International, Reading Municipal, and Lehigh Valley International Airports are all within an hour's driving distance. Shopping is easy and convenient. Restaurants and places of worship abound within the Township as well as in surrounding areas.

Limerick Township is an emerging community that provides housing for all lifestyles and price ranges. It is one of four communities in the Spring-Ford Area School District which provides excellent educational opportunities for students in kindergarten through twelfth grades.

In addition to four public golf courses and one private golf course there are five public parks which offer picnic facilities and other accommodations for recreation and relaxation. Limerick Community Park, Kurylo Preserve, Linfield Sports Park, Trinley River Park, and Veterans Park are excellent places for both passive and active recreation.

Limerick Township is a great place to call home!

Appointed and Elected Officials

BOARD OF SUPERVISORS

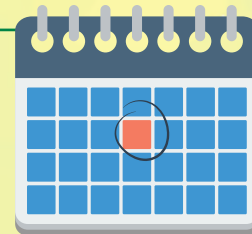
D. Elaine DeWan	edewan@limerickpa.org
Patrick Morroney	pmorroney@limerickpa.org
Thomas J. Neafcy, Jr.	tneafcy@limerickpa.org
Kara Shuler	kshuler@limerickpa.org
Kenneth W. Sperring, Jr.	ksperring@limerickpa.org

TOWNSHIP STAFF

Township Manager Daniel K. Kerr - dkerr@limerickpa.org
Assistant Township Manager/Treasurer Beth F. DiPrete - bdiprete@limerickpa.org
Chief of Police R. Brian Skelton - rbskelton@limerickpa.org
Codes Services Robert F. Loeper, Jr. - rloeper@limerickpa.org
Emergency Services Gregory R. Breyer - gbreyer@limerickpa.org
Parks and Recreation Angela M. Russell - arussell@limerickpa.org
Public Works Superintendent William R. Bradford - wbradford@limerickpa.org
Planning & Zoning Greta Martin Washington - GretaMartinWashington@limerickpa.org

APPOINTED MUNICIPAL OFFICIALS

Solicitor, Joseph J. McGrory, Jr. Esq <i>Hamburg, Rubin, Mullin, Maxwell & Lupin, PC</i>
Civil Engineer, Khaled R. Hassan, P.E. <i>Pennoni Associates, Inc.</i>
Township Traffic Engineer, Joseph P. Platt, P.E. <i>Traffic Planning and Design, Inc.</i>
Township Planner, Peter Simone, RLA, FASLA <i>Simone Collins Landscape Architecture</i>



Township Meeting Schedule

Board of Supervisors
1st and 3rd Tuesday at 7:00PM

Planning Commission
4th Thursday at 7:00PM

Zoning Hearing Board
4th Wednesday at 7:00PM

Parks and Recreation
2nd Tuesday at 7:00PM

Committees

Meet on an as-needed basis

Act 209 - Traffic Impact
Advisory Committee

Agricultural Security
Area Committee (ASA)

Industrial Development
Authority (IDA)

Open Space Committee

Pension Advisory Committee

Streetscape and Buffering
Committee

UCC Appeals Board



Government Officials Information

FEDERAL GOVERNMENT

Pat Toomey, U.S. Senator (R)

Washington, D.C. Office

248 Russell Senate Office Building

Washington, D.C. 20510

Phone: (202) 224-4254

Fax: (202) 228-0284

Philadelphia Office

US Custom House

200 Chestnut Street, Suite 600

Philadelphia, PA 19106

Phone: (215) 241-1090

Fax: (202) 224-4442

Robert P. Casey, Jr., U.S. Senator (D)

Washington, D.C. Office

393 Russell Senate Office Building

Washington, D.C. 20510

Phone: (202) 224-6324

Fax: (202) 228-0604

Philadelphia Office

2000 Market Street, Suite 610

Philadelphia, PA 19103

Phone: (215) 405-9660

Fax: (215) 405-9669

Ryan Costello, U.S. Congressman

Washington, D.C. Office

326 Cannon House Office Building

Washington, D.C. 20515

Phone: (202) 225-4315

West Chester Office

21 West Market Street, Suite 105

West Chester, PA 19382

Phone: (610) 696-2982

Fax: (610) 696-2985

STATE GOVERNMENT

Tom Wolf, Governor

Office of the Governor

508 Main Capitol Building

Harrisburg, PA 17120

Phone: (717) 787-2500

Fax: (717) 772-8284

John C. Rafferty, Jr.

State Senator (R)

Main Capital Building

20 East Wing

Harrisburg, PA 17120

Phone: (717) 787-1398

Fax: (717) 783-4587

Montgomery County Office

3818 Germantown Pike, Suite B

Collegeville, PA 19426

Phone: (610) 831-8830

Fax: (610) 831-8837

**Thomas J. Quigley,
State Representative (R)**

State Capitol Office

Room 125A, East Wing

PO Box 202146

Harrisburg PA 17120-2146

Phone: (717) 772-9963

Fax: (717) 782-2951

District Office

Park Towne Plaza

301 N. Lewis Road

Royersford, PA 19468

Phone: (610) 792-1280

MONTGOMERY COUNTY GOVERNMENT

Commissioners

One Montgomery Plaza

Suite 800

Norristown, PA 19404

Phone: (610) 278-3020

Dr. Valerie Arkoosh, Chair

Kenneth E. Lawrence, Jr., Vice Chair

Joseph C. Gale

Board of Assessments - (610) 278-3761

Courthouse - (610) 278-3000

Chamber of Commerce - (610) 277-9500

Health Department - (610) 278-5117

Planning Commission - (610) 278-3722

Voter Services - (610) 278-3280

LOCAL GOVERNMENT- LIMERICK TOWNSHIP

Ryan P. Wall

Elected Township Tax Collector

646 W. Ridge Pike

Limerick, PA 19468

limericktaxcollector@yahoo.com

Phone: (484) 938-8001

**Berkheimer Associates
Appointed Tax Collector**

www.hab-inc.com

(610) 588-0965

2018 Township Map and Information Guide

Area Utilities

CABLE

Comcast Cable 190 Shoemaker Road Pottstown, PA 19494 • (610) 323-6400 • www.comcast.com

Verizon-FIOS (800) 837-4966 • www.verizon.com

TELEPHONE

Verizon (New Service) (800) 922-0204 • www.verizon.com

WATER

Pennsylvania American Water (Customer Service) (800) 565-7292 • www.amwater.com

ELECTRIC

PPL Electric Utilities (Customer Service Center) 827 Hausman Road, Allentown, PA 18104 • (800) 342-5775
www.pplelectric.com

PECO Energy Company (Customer Service Center) 2301 Market Street, Philadelphia, PA 19103 • (800) 494-4000
www.exeloncorp.com

SEWER

Aqua (Customer Service) 762 W. Lancaster Avenue, Bryn Mawr, PA 19010 • (877) 987-2782
www.aquaamerica.com

Roads

ADOPT A HIGHWAY

PennDOT (610) 275-2368

POTHoles

State Roads PennDOT 1-800-FIX-ROAD

County Roads (Swamp Pike) County Maintenance (610) 278-3612

Township Roads Limerick Township Public Works Department (610) 495-6432

Private Roads Contact HOA or Developer

DAMAGED MAILBOXES DUE TO PLOWING

County Roads (Swamp Pike) County Maintenance (610) 275-2368

Township Roads Limerick Township Public Works Department (610) 495-6432

Private Roads Contact HOA or Developer

Animal Control

ANIMAL AND DEER REMOVAL

State Roads PennDOT (610) 275-2368, Option 0

Township Roads Pennsylvania Game Commission (610) 926-3136

TOWER HEALTH
Advancing Health.
Transforming Lives.

**PHOENIXVILLE HOSPITAL
AND POTTSTOWN HOSPITAL**
ARE NOW PART OF
ONE DYNAMIC
HEALTH SYSTEM:
TOWER HEALTH.

Reading Hospital • Brandywine Hospital
Chestnut Hill Hospital • Jermersville Hospital
Phoenixville Hospital • Pottstown Hospital

Tower Health Medical Group
Tower Health Partners
Tower Health-UPMC Health Plan

towerhealth.org

Family Owned & Operated since 1971!

MONTICO FENCE
Fencing, sheds, gates, arbors & more!

Office: 610-287-7800 • Fax: 610-495-1923
info@monticofence.com • www.monticofence.com

FALCO and Associates
Teri M. Falco, CPA, CISR
Vice President

675 N. Lewis Rd.
Limerick, PA 19468

Tel: 610-495-8840
Fax: 610-495-8529
Email: tfalco@falcoassociates.com
www.falcoassociates.com

LIMERICK FINANCIAL
A Financial Planning and Investment Management Firm

675 N. Lewis Road, Limerick, PA 19468

Charles E. Falco, Jr., MSFS, CFP
President

610-495-7911 • cfalco@limerickfinancialgroup.com
www.limerickfinancialgroup.com

Newly Renovated Apartments
844.388.6658

Botanica Cottages
APARTMENT HOMES

100 Hunsberger Drive • Limerick, PA 19468
BotanicaCottages.com

Located inside
LIMERICK BOWL
Sports Bar & Grill

653 W. Ridge Pike
www.LimerickBowl.com

ALL SMILE DENTAL CENTER
Cosmetic and Family Dentistry

Ning Zhang, D.M.D.
393 N. Lewis Road
Pottstown, PA 19468
(610) 792-0060

Call Us Today
(610)495-6945

CREKESIDE
393 N. Lewis Road
Pottstown, PA 19468
www.crekidesidesportsbar.com

Pennoni
CONSULTING ENGINEERS

One Drexel Plaza
2001 Market Street
Philadelphia, PA 19104

LIMERICK CAR WASH

838 N. Lewis Road • Limerick, PA 19468
610-495-1730 • Fax: 610-495-1731
www.limerickcarwash.com

For All Your Storage Needs

HIDE SEEK SELF STORAGE

415 West Ridge Pike
Limerick, PA 19468
610-495-5556
www.hideandseekselfstorage.com

results matter.

Personal Injury Litigation • Workers' Compensation • Social Security Disability
Real Estate • Land Use/Zoning • Family Law • Wills/Trusts/Estate
Labor & Employment Law • Civil Litigation • Tax & Business Law
Municipal Law • Education Law • Criminal Law

DISCHELL BARTLE DOOLEY
dischellbartle.com

The Clear Advantage in Glass Products

ALDERFER GLASS

205 W. Ridge Pike • Limerick, PA 19468
610-489-2221 • Fax: 610-489-2913
www.alderferglass.com

Park Towne Beverage, Inc.
Open 7 Days
Katie Harris 610.948.0970

Our dedicated team of agents have well over 100 years of experience in personal, commercial, life and health insurance planning.

RON BLACK AGENCY
The Lasky Group
380 N. Lewis Rd.
Pottstown, PA 19468
610-948-4830
www.ronblackagency.com

Just Cruisin'
AUTO SALES OF LIMERICK

247 Swamp Pike, Limerick, PA 19468
jcautosales.com • 610-287-4523

MAJESTIC FLOORING
A HOME DESIGN INC. Limerick, PA 19468

Hardwood • Tile • Custom Staircases • Backsplashes
Kitchens & Bathroom Remodels • And More
Open 7 Days • Free Estimates
MajesticFlooring@Limerick.com • 610-831-9744

\$33 Off Any New Pest Control Service!
Call For Details

DIRKSPMS.COM

LIMERICK Veterinary Hospital
345 W. Ridge Pike
Limerick, PA 19468

Puppy Kindergarten and Obedience classes
are starting soon. Call today for details!

P: 610-489-2848 • F: 610-489-0618
E: paw@limerickvet.com • limerickvet.com

SUNSHINE Café
The Best Coffee in Town!

Find us on F!

Open 7 Days • Breakfast Served All Day
610-409-8420 • sunshinecafe@limerick.com
BREAKFAST • LUNCH • DINNER

Offering a Selection of a Wide-Stocked Store

LIMERICK HARDWARE COMPANY
HOME & GARDEN

712 W. Ridge Pike
Limerick, PA 19468
610-495-6000
610-495-6001 (fax)
info@LimerickHardwareCompany.com
LimerickHardwareCompany.com

our Team Approach to Care

PMA Limerick
410 W. Linfield-Trappe Rd., Suite 100, Limerick, PA 19468
610-489-2300 | pma@doctor.com

Our dough is made fresh daily!

Ross's pizzeria
301 N. Lewis Rd. • Park Town Plaza • Pottstown
610.792.1974
rossspizzeria.com

For all your banking needs, use the red key.

Visit a local branch today!

KeyBank

LIMERICK
260 W. Ridge Pike
610-489-7216

POTTSTOWN-EAST END
1500 East High St
610-489-7201

POTTSTOWN
223 Shoemaker Road
610-327-9944

Limerick Collision Center
60 INDUSTRIAL PARKWAY
LIMERICK, PA 19468
610-495-2000

Specializing in Antique & Classic Cars

Expert Auto Body Repair,
Foreign & Domestic
Cars, Trucks & Boats

Complete Mechanical
Repair Facility

State Inspection • Salvage Yard
Auto Sales • Used Auto Parts

Turtle Creek is a 4.5 star, 18 hole championship
golf course in the heart of Montgomery County.

TURTLE CREEK
610-489-5133
turtlecreekgolf.com

Anthony Crisi Sales Consultant

6700 Parkenton Ave
Baltimore, PA 19468
610-582-4355 | cell 484-651-9304
anthony@anthonycrisi.com
www.garbsbids.com

EPPS BEVERAGES

80 W. Ridge Pike (Rt. 422), Limerick, PA 19468 • 610-489-7555

HRMM & L
HAMBURG, RUBIN, MULLIN,
MAYHEW & LEITON, PC

Joseph J. McGroarty, Jr.

Main Office: 373 Meritt Road, PO Box 1479
Limerick, PA 19468-0773
Phone: 610-495-1600
Fax: 610-495-1605
www.HRMM.com • Email: J.McGroarty@HRMM.com

Limerick Office: 296 West Ridge Pike
Suite 204
Limerick, PA 19468
Phone: 610-495-1600
www.HRMM.com • Email: J.McGroarty@HRMM.com

hometownpress
A CBN Company

This Community Map is produced for
Limerick Township by
Hometown Press
215-257-1500.

2018, All rights reserved.®

Serving Montgomery County since 1997

Limerick Dental Care
Venessa Adolf, D.M.D.
610.409.2644
www.LimerickDentalCare.com
Family & Cosmetic Dentistry
397 West Ridge Pike • Limerick, PA 19468

Specializing in Customer Excellence

Peter Lumber Company
Lumber • Doors & Windows • Mouldings • Kitchens & Bath
270 W. Ridge Pike • Limerick, PA 19468
610-489-9301 • www.peterlumber.com

KELLY'S WORKCLASS AUTOMOTIVE

444 West Ridge Pike
Limerick, PA 19468
484-369-8342
www.KellysWorldClassAuto.com

Complete Automotive
Service • PA State Inspection
and Emissions
Brake Services • Engine
Diagnosis and Repair
Steering and
Suspension • Routine Maintenance

WESTFIELD 41
APARTMENT HOMES

151 Holly Drive • Pottstown, PA 19468 • westfield41.com
P: 484-762-8422 • F: 484-762-8423
westfield41leasing@scullycompany.com

PEN AIRWAYS

Heritage Field Airport KPTW
3310 W. Ridge Pike • Pottstown, PA 19464
www.heritagefieldairport.com

Lafayette WELDING, INC.
64 WEST RIDGE PIKE | LIMERICK, PA 19468

JOHN T. MELLON, III
President

P: 610-489-3434 | F: 610-489-3928 | Jmellon66@comcast.net

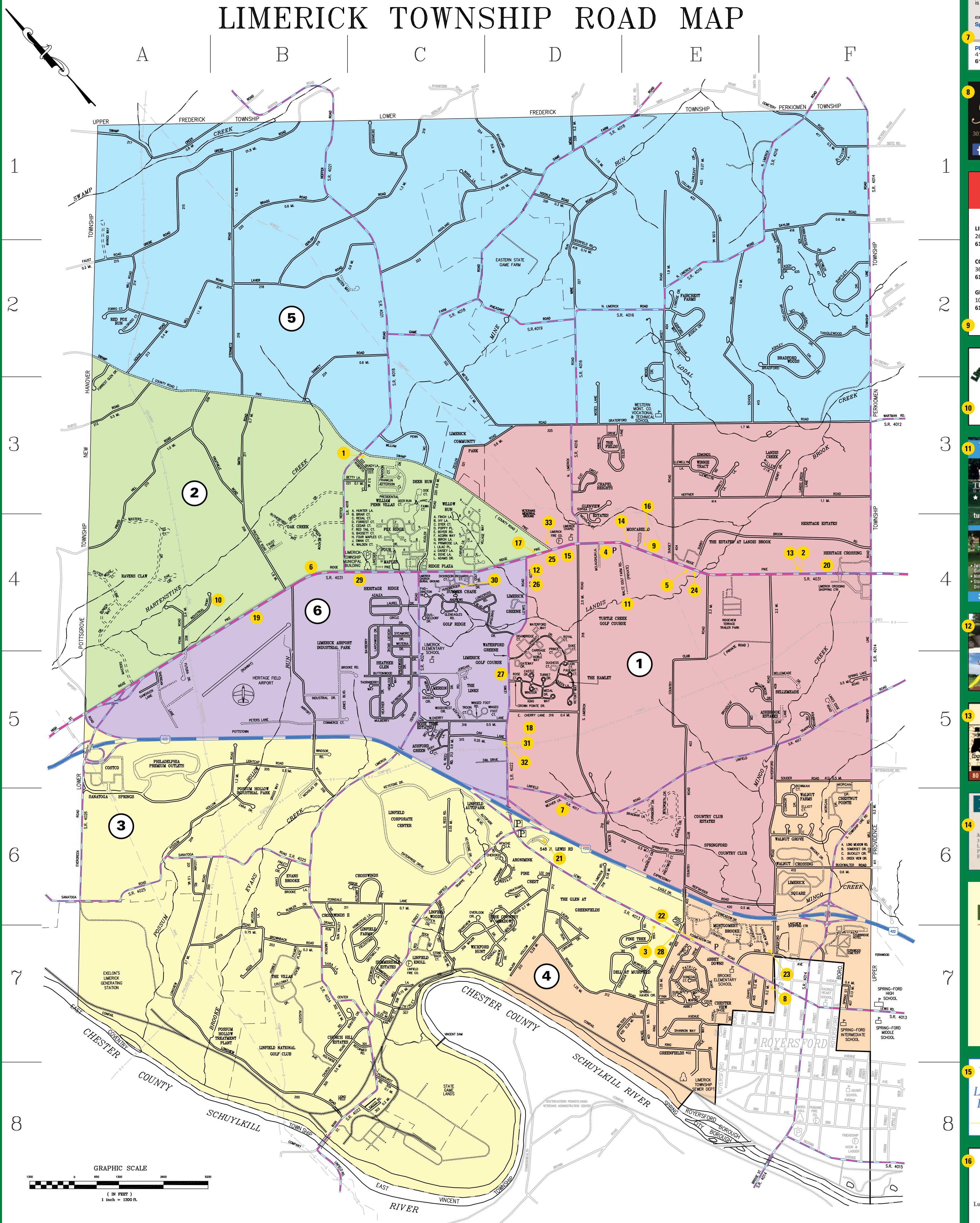
Moving Forward Together

TB
Traffic Signal & System Design
Construction Management & Inspection
Bridge Design & Inspection
Heavy Roadway Construction
Construction Management & Inspection
Construction Management & Inspection
Construction Management & Inspection

Official Subcontractor to PA, NJ, NY and DC
www.tbllc.com | 610-255-1000

Buying or selling a home?
Call us, your local real estate professionals.

Brittingham/McCouch
sales team
610-574-9271
teresekw@gmail.com



Legend

TOWNSHIP MAINTAINED ROAD	STATE MAINTAINED ROAD	MUNICIPAL BUILDING	PARK & RIDE
PRIVATELY MAINTAINED ROAD	LIMITED ACCESS HIGHWAY (STATE)	POLICE STATION	POST OFFICE
FUTURE DEDICATED ROAD	EMERGENCY ACCESS/FIRE LANE	SCHOOL	SUPPORTING ADVERTISER
COUNTY ROAD		FIRE STATION	

Voting Districts and Polling Locations

District	Location
Limerick 1	St. James United Church of Christ 321 N. Limerick Rd.
Limerick 2	Limerick Administration and Police Building 646 W. Ridge Pike
Limerick 3	Limerick Fire Co. #1 1077 Main St.
Limerick 4	Brooke Elementary School 339 N. Lewis Rd.
Limerick 5	Evans Elementary School 125 Sunset Rd.
Limerick 6	Limerick Elementary 81 Limerick Center Rd.

Road Index

10TH AVE.....F-7	BRADFORD DR.....F-2	DEERFIELD RD.....D-2	FINCH LA.....C-3	HOMESTEAD LA.....C-6	LAVER RD.....B-2	MILLER CIR.....F-3	PRESIDENTIAL DR.....C-3	SAYLOR RD.....F-1	TRINLEY MILL RD.....C-7
422 EXPRESSWAY.....A-5	BRAGG RD.....B-1	DETWILER DR.....F-2	FINLEY CIR.....B-6	HORSESHOE DR.....E-7	LEAF LA.....F-5	MINE RUN RD.....F-3	PRESTWICK CT.....E-6	SCHOOL RD.....E-2	TRISTEN WAY.....C-2
7TH AVENUE.....E-7	BRAEMAR LANE.....E-6	DEVONSHIRE CIR.....F-2	FORREST CT.....C-4	HOCK RD.....D-1	LEE DR.....D-6	MORGAN DR.....D-6	PRIMROSE LA.....C-3	SHADY LA.....E-2	TROON CT.....B-5
ABBEY DRIVE.....E-7	BRIAR CT.....C-4	DIESINGER DR.....C-1	FORREST GLEN DR.....A-2	HUNSBERGER DR.....C-4	LEWIS RD.....D-5	MOSES LA.....D-3	PRINCE CT.....D-5	SHAMROCK CT.....E-7	TURNBERRY DR.....D-5
ACORN WAY.....C-4	BROADLEAF CIR.....E-5	DICKINSON CT.....C-4	FOUR MAPLES CT.....C-4	HUNTER LA.....C-4	LEWELLYN LA.....E-3	MUIRFIELD DR.....E-7	PRUSS HILL RD.....A-3	SHANNON WAY.....E-7	TURRET DR.....D-6
ADAMS DR.....C-4	BROOKE DR.....F-6	DOE CT.....C-3	FOX TR.....D-7	INDUSTRIAL DR.....B-5	LIAC PL.....C-4	MULBERRY DR.....C-5	PUTTER LA.....A-4	SHERIDAN LA.....A-5	VICTORY WAY.....D-5
AIRPORT RD.....B-5	BROOKE RD.....B-5	DONEGAL CT.....E-7	FOXKROFT CIR.....E-7	INDUSTRIAL PKWY.....A-4	LIMERICK CENTER RD.....C-5	N. LIMERICK RD.....D-2	QUEEN LA.....D-5	SMITH RD.....B-3	VILLAGE WAY.....C-4
ANNETTE DR.....D-3	BROWNBACK RD.....B-7	DOVE LA.....C-4	FOXMEADOW CIR.....E-7	INVERNESS CIR.....E-6	LINFIELD TRAPPE RD.....D-6	N. REED RD.....D-5	RAILROAD ST.....C-7	SOMERSET CIR.....F-6	W. CHERRY LA.....C-5
APACHE LA.....D-6	BUCKLEY CIR.....F-6	DRAKE RUN.....B-6	FOXMEADOW DR.....E-6	IVY LA.....C-3	LION CT.....D-5	NAVAJO DR.....D-6	RED ROCK CIR.....C-7	SOUDER RD.....F-5	WALKER RD.....C-4
ARBOR CT.....C-6	BUCKWALTER RD.....F-6	DRABBRIDGE CT.....D-4	FRANKLIN CT.....C-6	JEFFERSON CT.....C-3	LEWELLYN LA.....E-3	NEFFER DR.....D-1	RED TAIL CT.....C-4	SOUDEUR RD.....F-5	WALKER RD.....C-4
ARONIMINK DR.....D-6	BUNKER WAY.....A-4	DUBLIN CT.....E-7	FRUITVILLE RD.....B-4	JESSICA CIR.....E-2	LONG MEADOW RD.....F-6	NICHOLAS CT.....D-3	REFORMED RD.....C-7	SPRING LAKE RD.....F-5	WALNUT DR.....E-7
ASHBROOK DR.....F-5	BUTTONWOOD DR.....C-5	DUCHESS CT.....D-5	FUTURA DR.....A-5	JOAC CIR.....E-2	LONGCROSS RD.....D-4	NICHOLAS DR.....B-6	REGAL CT.....C-7	SPRING ST.....F-7	WALNUT ST.....E-7
ASHFORD WAY.....E-2	CALLOWAY CT.....B-7	DUKE CT.....D-4	FYNN DR.....E-7	JONATHANS WAY.....D-6	LONGVIEW RD.....D-7	NOBLE WAY.....D-5	REIFSNYDER DR.....E-6	SPRINGFORD RD.....E-6	WALTERS LA.....D-4
ASHLEY DR.....F-2	CARRIAGE LA.....D-4	DUNLEAVY CIR.....E-1	GALIE WAY.....E-7	JONES BLVD.....D-6	LORRAINE DR.....D-7	OAK LA.....C-5	RICHTERS CT.....C-4	SPRINGHAVEN CR.....E-7	WALTZ GOLF FARM RD.....D-7
ASPEN DR.....C-7	CARVER LA.....C-4	DURHAM CIR.....E-2	GAME FARM RD.....C-2	JORDAN CT.....C-5	LOZARKE RD.....A-6	OAK ST.....F-7	RIDGE PIKE.....A-5	SPRUCEWOOD DR.....C-5	WATERFORD WAY.....D-4
AUGUSTA AVE.....B-7	CASTLE DR.....D-5	DUSSELDORF DR.....C-4	GATEWAY DR.....D-5	KEEN RD.....B-7	LYNROSE CIR.....E-2	OAK CREEK DR.....B-4	ROBERTA LA.....C-3	ST. ANDREWS BLVD.....C-4	WEAVER LA.....D-6
AUTOPARK BLVD.....D-6	CEADAR CT.....C-4	GERLOFF RD.....B-2	KENDALL LA.....D-7	KENDALL LA.....D-7	MAISON CT.....C-3	OLD MILL RD.....F-8	ROSE CT.....D-5	STEINMETZ CT.....B-2	WEDGE CT.....A-4
AUTUMN LA.....C-6	CEMETERY RD.....E-1	EAGLE DRIVE.....E-6	KEYSTONE DR.....C-4	KEYSTONE DR.....C-4	KEYSTONE DR.....C-4	OVERLOOK CIR.....C-6	ROSEWOOD TR.....C-7	STONEBACH CT.....C-7	WENSEL CIR.....E-2
AZALEA CIR.....C-4	CHAPEL RD.....F-6	E. CHERRY LA.....D-5	GRANDVIEW DR.....C-7	KIBBLEHOUSE DR.....C-2	LEWELLYN LA.....E-3	PADDINGTON TR.....C-4	ROYAL CT.....C-7	STRAFFORD CT.....E-7	WENTWORTH CIR.....E-6
BARTLETT DR.....F-2	CHEROKEE CT.....D-6	EDMONDS DR.....E-3	GRATERFORD RD.....D-3	KILARNEY WAY.....E-7	MAJORS HOLLOW RD.....D-7	PAGEANT CT.....D-5	ROYERSFORD DR.....F-5	SUMMERDALE LA.....C-7	WEXFORD CT.....E-7
BASSETT CT.....C-4	CHESTNUT ST.....F-7	GOLF DR.....C-4	GREBE RD.....A-4	KING RD.....D-7	MAJOR HOLLOW RD.....D-7	PALMER PL.....B-7	RUMLER DR.....B-6	SUN VALLEY DR.....B-7	WILLIAM PENN DR.....C-3
BAYBERRY DR.....C-5	CHURCH RD.....E-8	EILEEN LA.....D-3	GREEN MEADOW CT.....B-4	KING WAY.....D-5	MALSBY RD.....D-7	PAN CR.....A-4	RUPERT RD.....A-5	SUNNY BROOK RD.....E-4	WILLOWWOOD DR.....F-5
BAYHILL CIR.....E-6	COLIN CT.....E-7	ELIO CIR.....D-4	GRIGGS WAY.....B-6	KNIGHT DR.....D-5	MANGO WAY.....A-2	PARCEL LA.....C-5	RUTHERFORD CT.....B-4	SUNSET RD.....D-4	WINDSOR CT.....D-5
BELLA ROSA CT.....C-5	COLLINS LA.....E-1	ELLIOT CT.....F-6	GRISTMILL LA.....C-7	KOCH DR.....F-2	MARIA LA.....C-1	PATRICK WAY.....E-7	RYANFORD RD.....D-1	SWAMP CREEK RD.....A-1	WINDSOR RD.....B-5
BELLEMEADE DR.....F-5	COLORADO CT.....A-2	ELM ST.....E-7	HAINES DR.....F-2	KUGLER RD.....C-4	MASTERS DR.....A-4	PEBBLE BEACH DR.....B-7	S. LIMERICK RD.....D-6	SWAMP PIKE.....C-3	WINGED FOOT CT.....C-5
BENNER RD.....D-7	COMMERCE CT.....B-5	ENTERPRISE DR.....C-6	HARNETT LA.....E-3	KURTZ RD.....A-3	MCLAUGHLIN LA.....D-4	PENN RD.....A-4	S. REED RD.....C-6	SWAMP PIKE.....C-3	WINGED FOOT RD.....C-5
BETTY LA.....C-3	CONNOR DR.....F-6	EVANS BROOKE LA.....B-6	HEATHER DR.....C-5	LAKES EDGE RD.....F-3	MEDAL DR.....D-5	PENNHURST RD.....C-8	SACCO RD.....C-8	SYCAMORE DR.....C-4	WISTERIA DR.....C-4
BIRCH LA.....C-4	COUNTRY CLUB RD.....E-4	EVERGREEN RD.....A-6	HEFFNER RD.....E-3	LAKESIDE DR.....B-6	MELISSA LA.....D-6	PERY CT.....C-5	SANATOGA DR.....A-6	TANGLEWOOD DR.....F-2	WOODCREST CIR.....C-5
BLOSSOM LA.....F-1	CREEKVIEW CIR.....F-6	FAUST LA.....B-4	HEMLOCK WAY.....C-5	LAKESIDE DR.....B-6	MENG RD.....D-1	PETERS LA.....D-5	SANDTRAP DR.....D-7	TAVISTOCK DR.....D-7	WOOLLY RD.....D-6
BORATEN CIR.....C-7	CROWN POINTE DR.....D-5	FAUST RD.....F-3	HENRY DR.....C-3	LANDIS CREEK LA.....F-3	MERION DR.....D-5	PHEASANT RD.....B-2	T-EE CT.....A-4	ZARA DR.....D-6	ZIEGLER RD.....C-3
BORATEN DR.....B-7	D&L DR.....C-5	FAVON CT.....C-3	HICKORY GROVE DR.....C-4	LARCHWOOD DR.....C-4	METKA RD.....C-2	PINE TREE RD.....E-6	SARA LA.....B-7	THORNHURRY WAY.....C-5	ZORRO CT.....A-2
BOYMAN CT.....F-6	DAISEY LA.....C-4	FERNDALE LA.....C-6	HIGHLAND RD.....C-2	LAURA LA.....D-6	MILL LA.....C-7	POPPY PL.....C-4	SALONIA CIR.....C-5	N. TOWNSHIP LINE RD.....F-2	
BOYNER RD.....C-4	DEER RUN CT.....C-3	FELDSTONE LA.....C-6	HOCKLEY RD.....D-1	LAUREL DR.....C-4	MILL RD.....A-2	POSSUM HOLLOW RD.....A-6	SAWCHUCK LA.....A-5	S. TOWNSHIP LINE RD.....F-2	