

The background of the slide is an aerial photograph of a landscape. The top portion shows a wide, green field or marshy area. Below this, a river winds through a patchwork of fields and some buildings. The bottom portion of the image shows a more developed area with buildings and roads. The text is overlaid on the top half of the image.

LIMERICK TOWNSHIP

# **Comprehensive Open Space Plan**

Public  
Meeting #1  
11.07.2019



- ❖ Project Introductions
- ❖ Project Schedule
- ❖ Project Background
- ❖ Existing Conditions Inventory & Data Collection
- ❖ Brainstorming Session
- ❖ Next Steps





# Simone Collins Landscape Architecture

**Peter M. Simone, RLA, FASLA, Principal**

[psimone@simonecollins.com](mailto:psimone@simonecollins.com)

**Sarah R. Leeper, RLA, Project Manager**

[sleeper@simonecollins.com](mailto:sleeper@simonecollins.com)

**Rob Gladfelter, Project Landscape Architect**

[rgladfelter@simonecollins.com](mailto:rgladfelter@simonecollins.com)

## Township Professional Staff Contacts

**Angela Russell - Parks & Rec Department Director**

**Ryan Yanchocik - Parks & Rec Department**

**Tim Haas - Administration**

**Marcy Mancini - Administration**

**Greta Martin Washington – Director of Community Planning**



# Limerick Open Space Citizen Advisory Committee

Erin P. Cohen	Parks & Recreation Committee
Keith G. Daywalt	Planning Commission
Allen Dowhie Jr.	Parks & Recreation Committee
Gregory Gray	Parks & Recreation Committee
Christopher Haring	Streetscape & Buffering Committee
Jennie Jonas	Streetscape & Buffering Committee
Dennis G. Keen	Parks & Recreation Committee
Liam Kaufman	Parks & Recreation Committee - Student Rep
Patricia Kaufman	Streetscape & Buffering Committee
Kenneth McLaughlin	Planning Commission
George Mokonchu	Citizen
John (Jack) B. Seber	Streetscape & Buffering Committee
Margie Schweitzer	Citizen (Former Parks & Recreation Committee)
Robert G. Richardson	Planning Commission



- ❖ Existing Conditions Inventory & Data Collection
- ❖ Catalogue Parks / Open Space by Township, County, State, & Non-Profit / Private
- ❖ Set Vision, Goals & Objectives
- ❖ Plan for Open Space
- ❖ Implementation Strategies





# Public Input Process

## Advisory and Public Meetings – 4 Each

- Meeting 1 - Programming, Brainstorming & Visioning
- Meeting 2 - Analysis of existing conditions & Initial Concepts
- Meeting 3 - Draft Comprehensive Recreation Plan
- Meeting 4 - Presentation of Final Plan to Board of Supervisors



Committee Meeting #1	Thursday, October 17th	7:00 - 8:30 PM
Public Meeting #1	Thursday, November 7th	7:00 - 9:00 PM
Committee Meeting #2	Thursday, January 9th	7:00 - 8:30 PM
Public Meeting #2	Thursday, February 6th	7:00 - 9:00 PM
Committee Meeting #3	Thursday, April 9th	7:00 - 8:30 PM
Public Meeting #3	Thursday, May 7th	7:00 - 9:00 PM
Committee Meeting #4	Wednesday, June 3rd	7:00 - 8:30 PM
BOS (Public Meeting #4)	Tuesday, June 16th	7:00

Internet Public Opinion Survey from November to May



# Public Input Process

## Public Survey:

<https://www.surveymonkey.com/r/LimerickOSP>

## Township Project Link:

<https://www.limerickpa.org/367/Open-Space-Update-Plan>

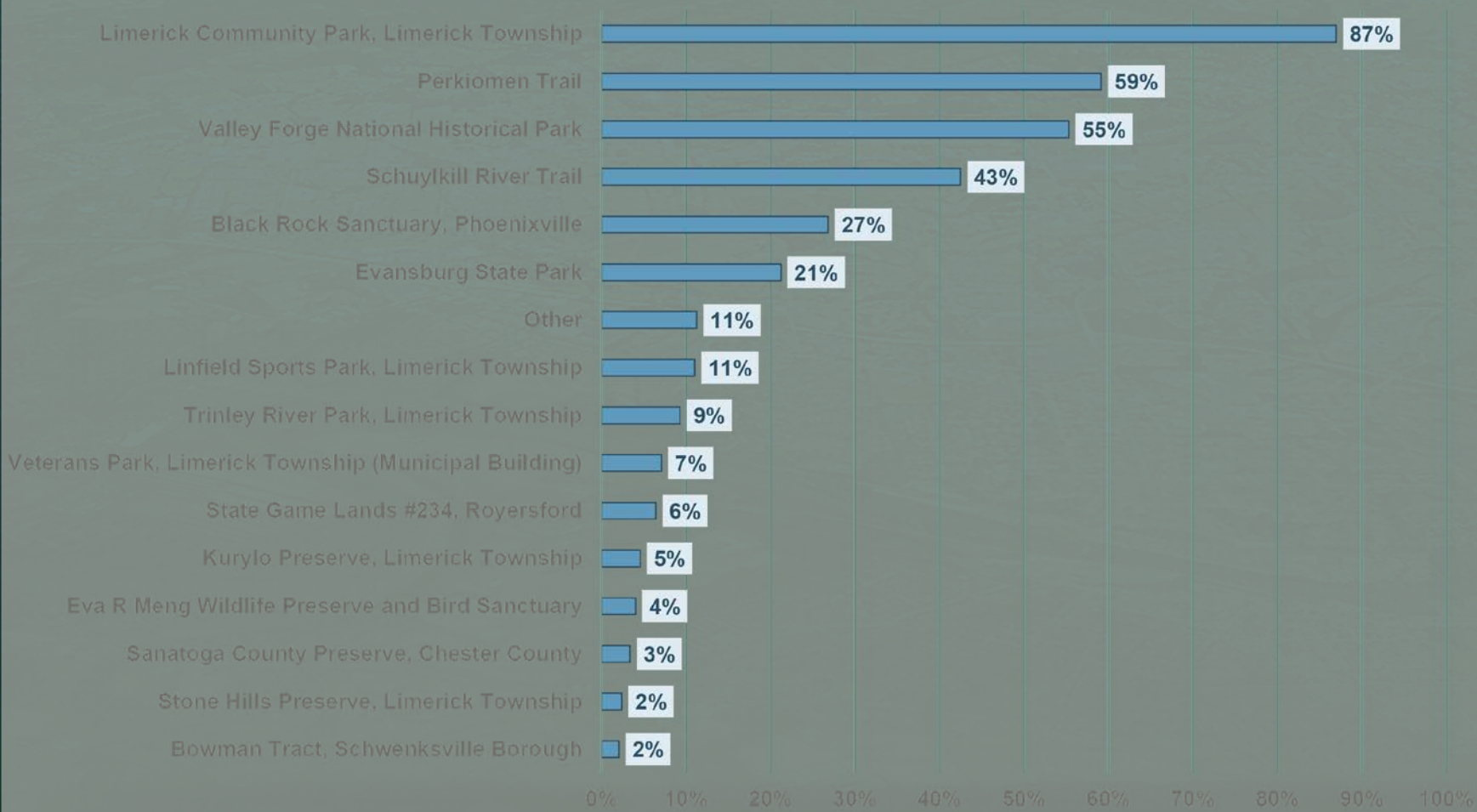




# Limerick Community Park Survey Results

## Oct 2017 - April 2018

Which parks, natural areas or open space areas do you visit for recreation purposes? (Please check all that apply) 913 Answers





# What is an Open Space Plan?

An Open Space Plan will guide the Township in future decisions on park lands and preserving open spaces. It will provide:

- ❖ Description of existing protected lands and open space system
- ❖ Evaluation of vulnerable natural resources, unprotected areas, vacant or underutilized land, and the park & open space needs of the community
- ❖ Recommendations and implementation strategy for next 20-30 years

The Open Space Plan will not address:

- ❖ Specific park amenities such as benches, playing fields, etc.
- ❖ Specific park master planning
- ❖ Specific trail planning



# Vision, Goals & Objectives

We suggest that these preliminary goals are only a starting point for discussion and will be thoroughly revised and refined as the plan advances.

- ❖ Engage in an open and transparent exchange of ideas where all ideas are considered and where everyone's voice can be heard throughout the design process.
- ❖ Provide for the open space needs of all age and abilities groups.
- ❖ Protect the Township's Open Space and Historic and Natural Resources from future development.



# Tools for Creating & Implementing a New Open Space Plan:

- ❖ Township Zoning & SALDO Ordinances
- ❖ Official Map
- ❖ Funding Alternatives
- ❖ Education
- ❖ “Out of the Box” Thinking / Creativity



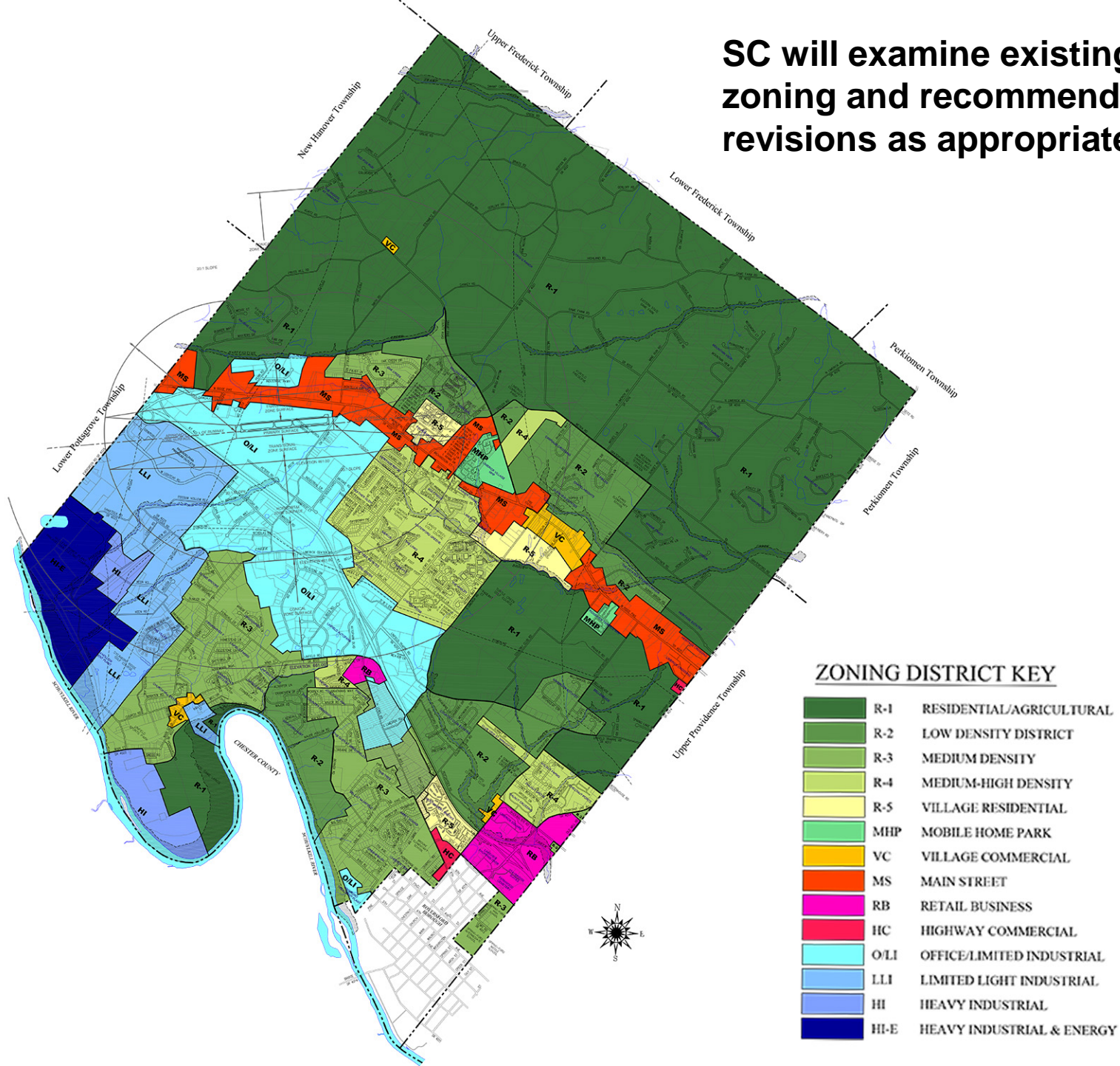
# Zoning as a Conservation Tool

Zoning regulations can assist in protection / conservation of:

- ❖ Open space
- ❖ Forested areas
- ❖ Prime agricultural soils
- ❖ Riparian buffers
- ❖ Steep slopes
- ❖ Historic and cultural resources
- ❖ Scenic Areas



SC will examine existing zoning and recommend revisions as appropriate.





## **SALDO Regulation can Help Implement an Open Space Plan Vision Through:**

- ❖ **Design standards that promote beauty**
- ❖ **Use of native plants**
- ❖ **Designs that account for facility life cycles**
- ❖ **Use of sustainable materials and products**
- ❖ **Connectivity Standards that are equitable**
- ❖ **Treating storm water as a resource**



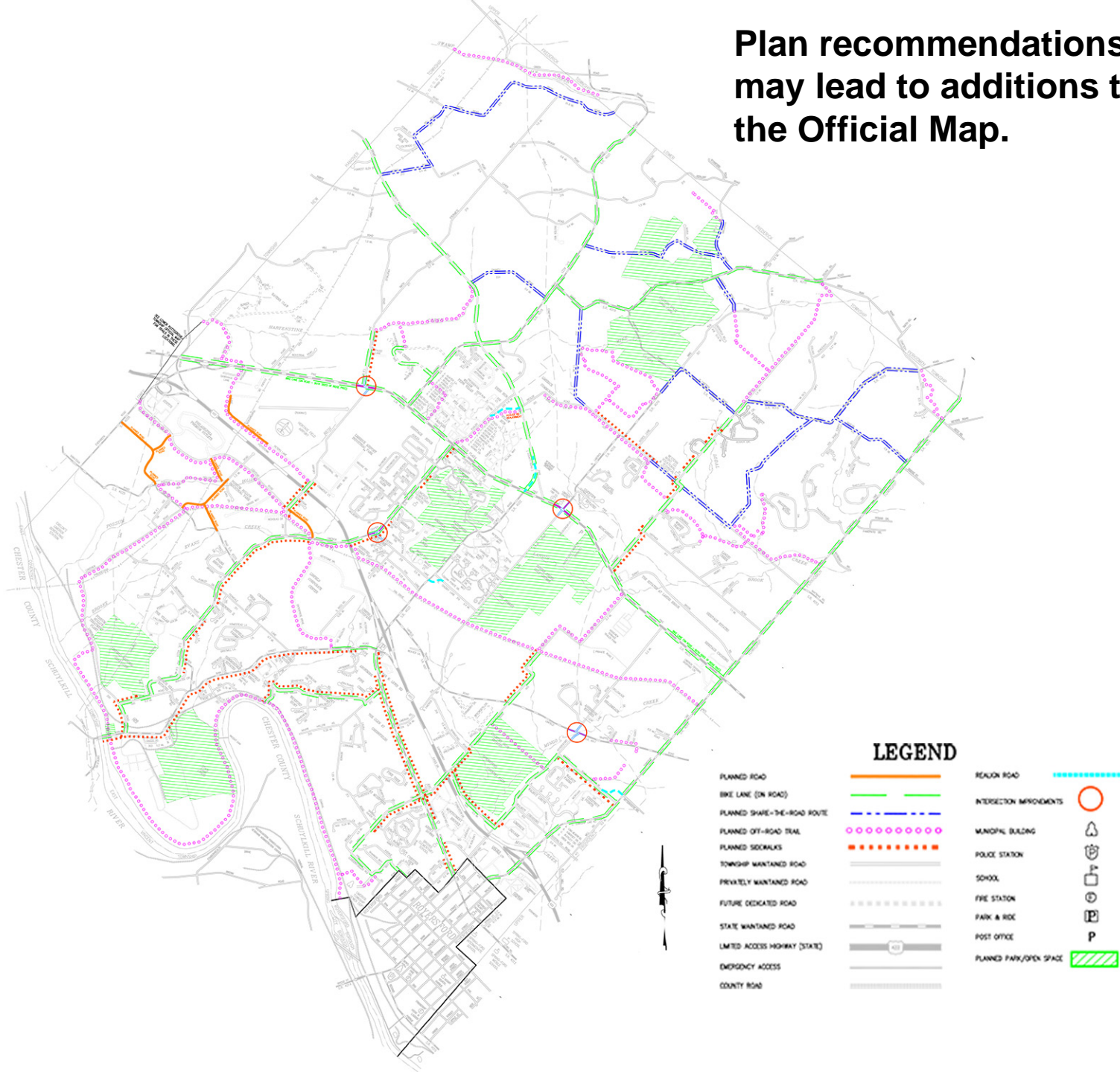
# What is an Official Map?

- ❖ A combined map and ordinance designed to implement goals and community vision set by Comprehensive Plan
- ❖ Shows locations of planned future public lands and facilities such as transportation, recreational parks and trails, and open space
- ❖ Effective negotiating tool for municipalities to ensure development is compatible and supportive of public goals
- ❖ Advances implementation of infrastructure and open space improvements (sometimes at no cost to taxpayers, ex: Westfield 41 Apt Homes trail )



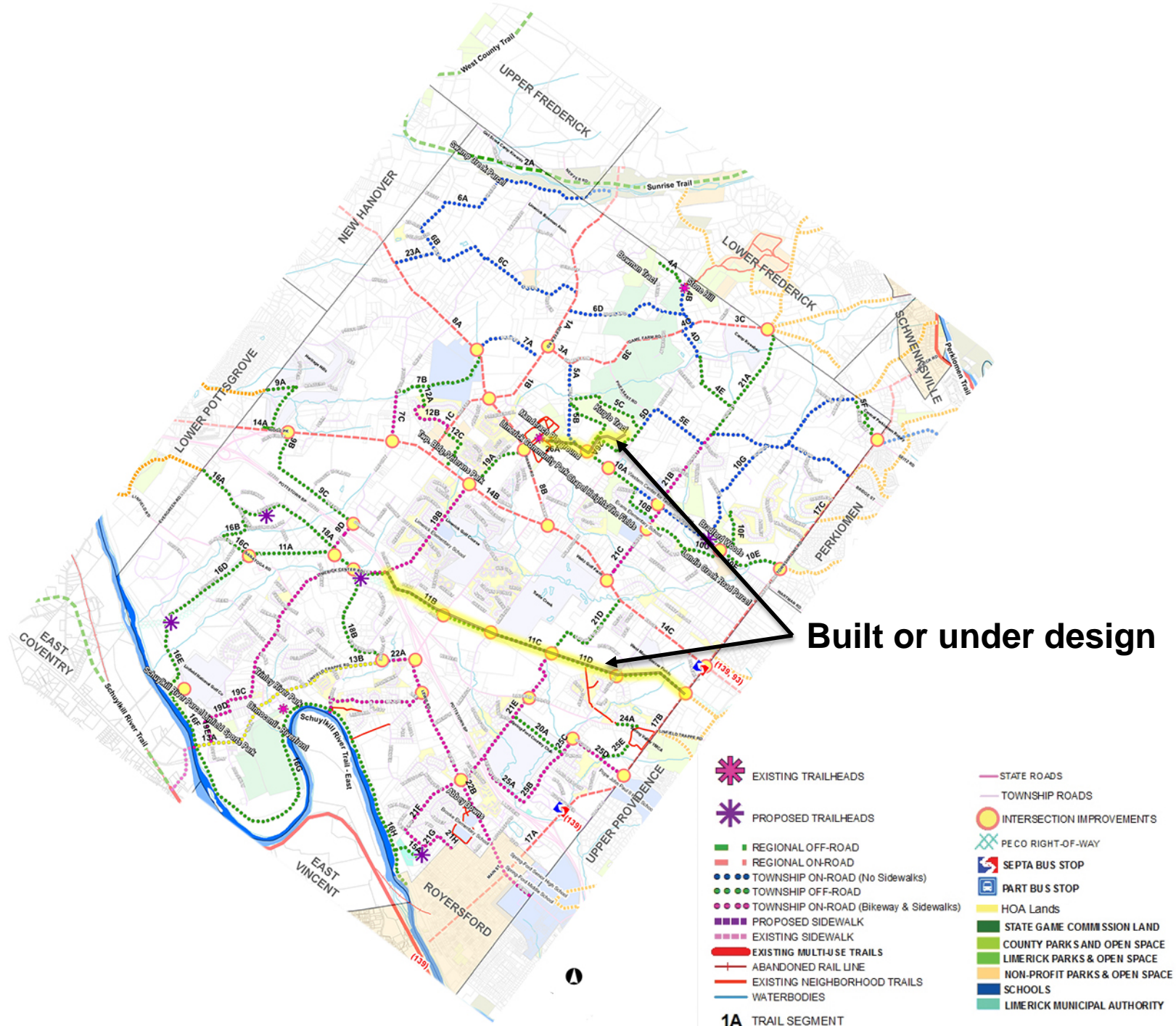


Plan recommendations may lead to additions to the Official Map.





# TRAIL PLAN





## Education

- ❖ This Open Space planning process can help educate the community and your consultant team about YOUR community values regarding open space
- ❖ Create advocates for continued open space preservation in Limerick
- ❖ Community Education is a requirement of MS4 permit plan

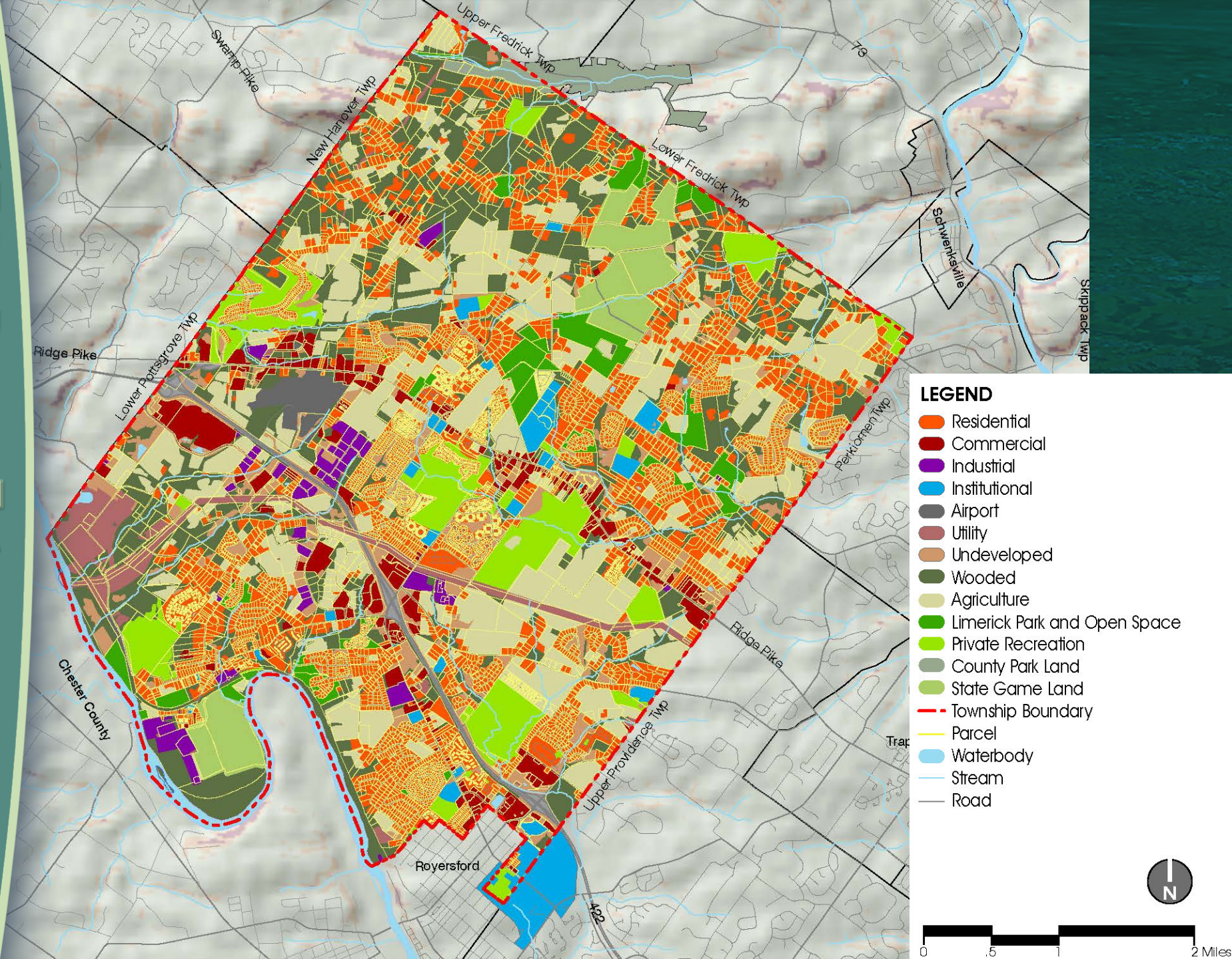


## **“Out of the Box” Thinking / Creativity**

- ❖ **YOUR ideas are incredibly valuable in this planning process. No one knows Limerick better than YOU.**
- ❖ **Creative ideas for funding and stewardship are important. NO municipality can care for open space lands by themselves. Community help is critical.**
- ❖ **Partnerships with community organizations, businesses, religious and fraternal organization is essential. “Adopt an open space”.**

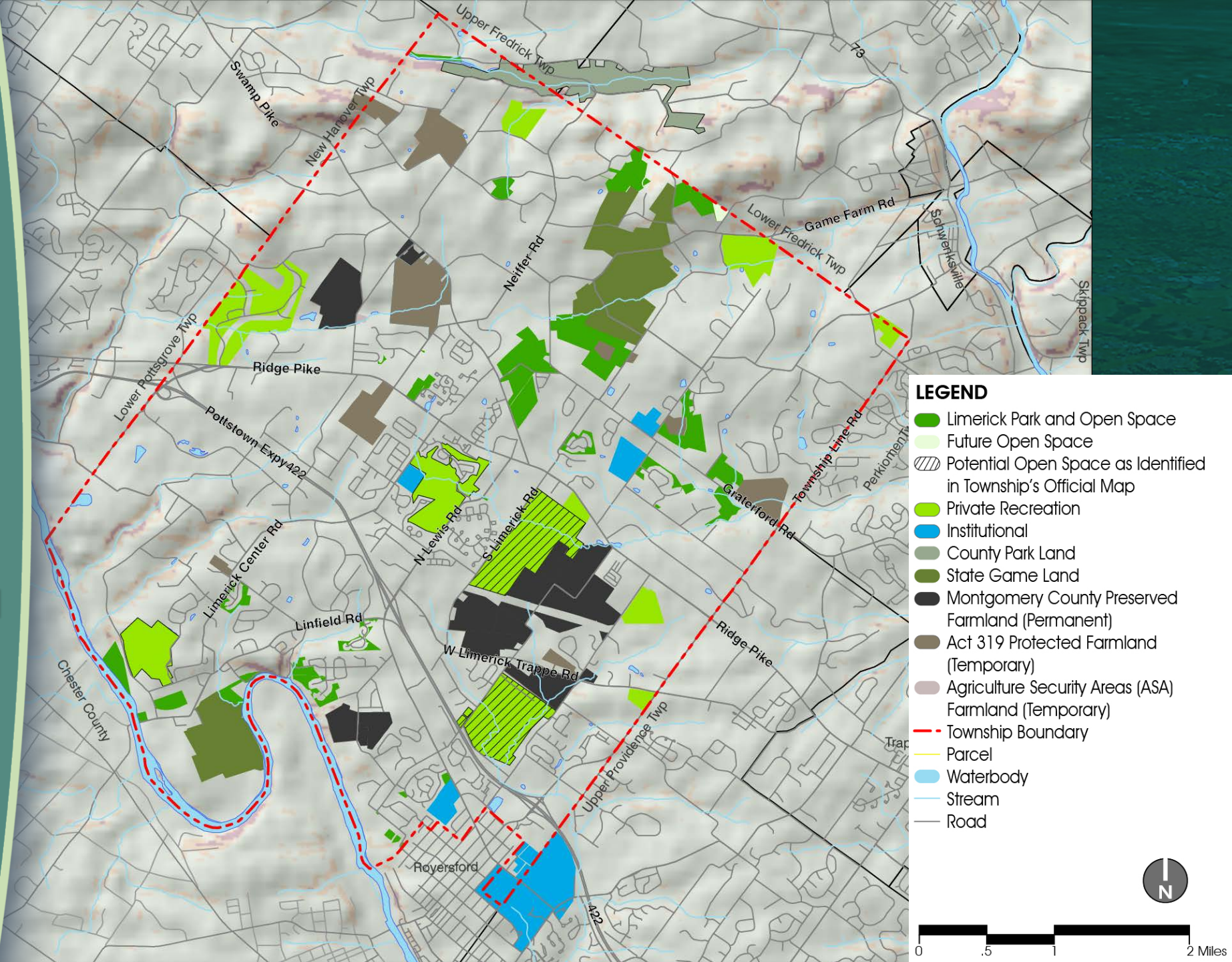


# LAND USE MAP





# OPEN SPACE MAP





# Existing Open Space Data

Open Space	Acres	% of Twp Land
<b>Limerick Township Total Area</b>	<b>14,576.43</b>	
Township Owned	445.59	3%
Private Recreation (Permanently Preserved / Covenant)	376.72	2.6%
Montgomery County Preserved Parkland	19.69	.1%
State Game Lands	485.10	3.3%
Montgomery County Preserved Farmland (Permanently)	562.20	3.9%
<b>Total Permanent Open Space</b>	<b>1,889.30</b>	<b>12.9%</b>
Private Recreation (Temporary)	526.84	3.6%
Act 319 Protected Farmland (Temporary)	366.46	2.5%
ASA Protected Farmland (Temporary)	2.25	0%
<b>Total Temporary Open Space</b>	<b>895.55</b>	<b>6.1%</b>

\* Note that this data will be updated as more information is gathered and confirmed

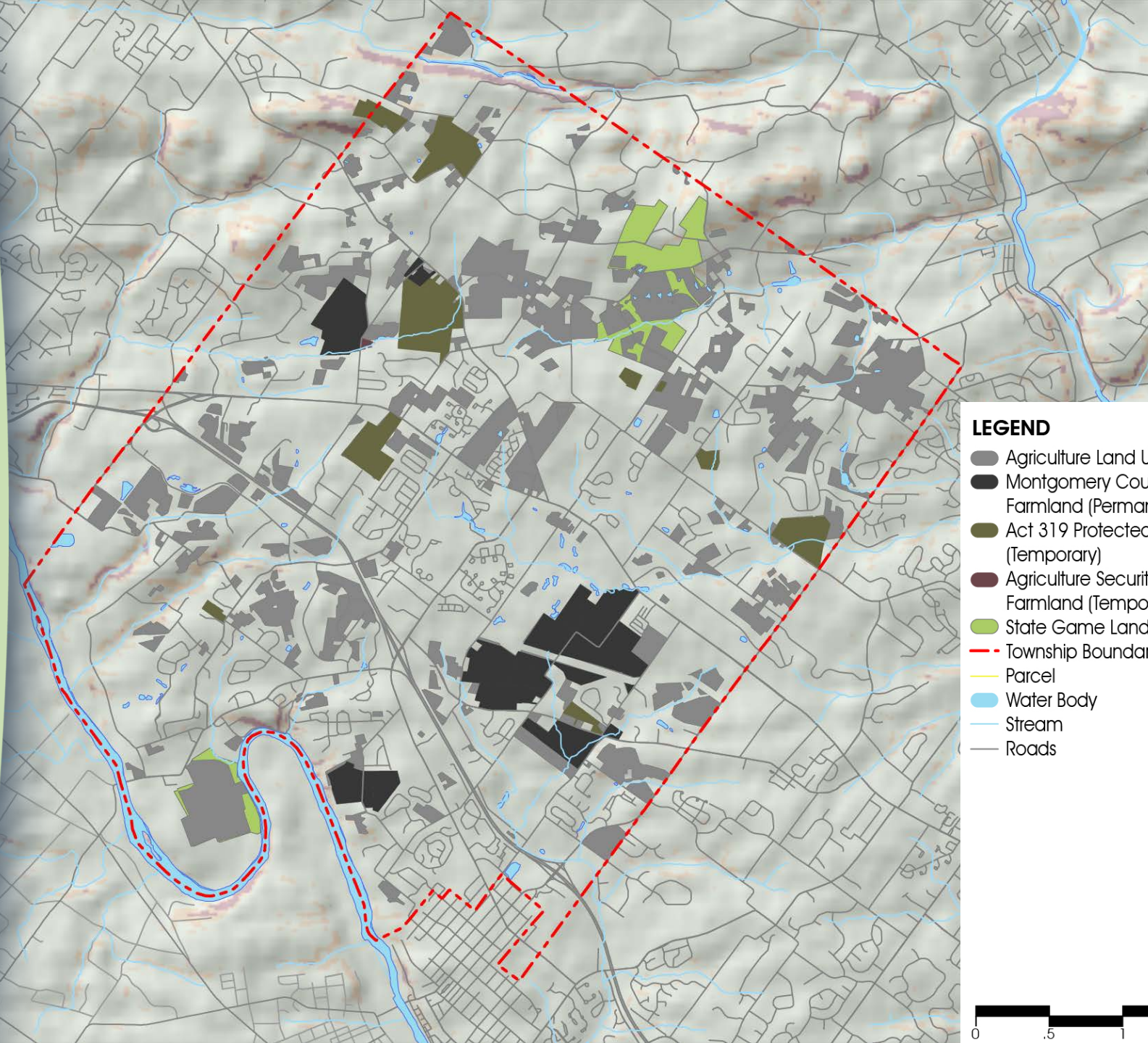


# Types of Agricultural Land Protection

- ❖ **Montgomery County Agricultural Land Preservation Program** – Permanent preservation of farmland through purchase of agriculture easements
- ❖ **Act 319 (Clean and Green Law)** – non-permanent conservation of agriculture and forested land through benefits such as reduced property tax
- ❖ **Agriculture Security Area ( Act 43)** – non-permanent conservation of agriculture land through benefits such as protection from local ordinances affecting normal farming activities



# AGRICULTURE MAP



## LEGEND

- Agriculture Land Use
- Montgomery County Preserved Farmland (Permanent)
- Act 319 Protected Farmland (Temporary)
- Agriculture Security Areas (ASA) Farmland (Temporary)
- State Game Land
- Township Boundary
- Parcel
- Water Body
- Stream
- Roads





# Preservation of Natural Resources

- ❖ Improved water quality protection within watersheds
- ❖ Stormwater management
- ❖ Improve ecological functions / diversity
- ❖ Beauty
- ❖ Steep slope stabilization
- ❖ Passive recreation opportunities “for the soul”





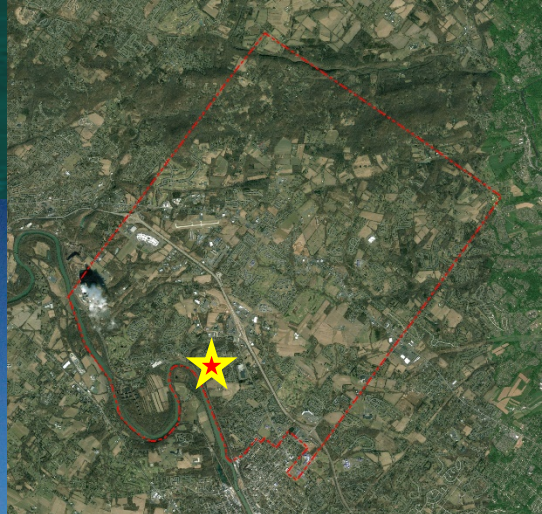
# NATURAL RESOURCE MAP



- LEGEND**
- Wooded Areas
  - Streams
  - Waterbodies
  - Wetlands
  - Slopes
    - 15-25%
    - 25%+
  - Watersheds
    - To Schuylkill River
    - To Perkiomen Creek
  - Flood Zones
    - 100 Yr
    - 500 Yr
  - Township Boundary

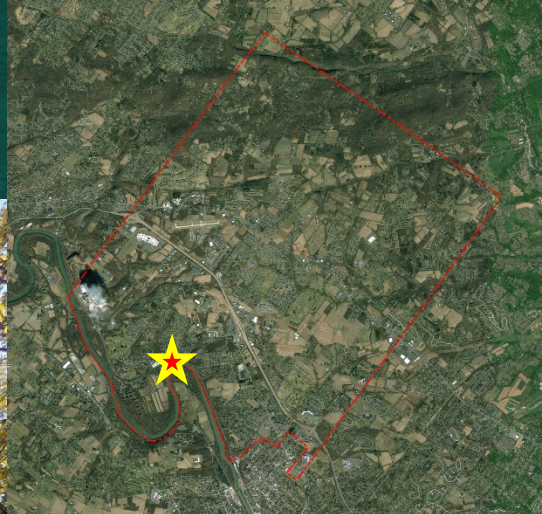
- Watersheds**
- 1 Swamp Creek
  - 2 Sanatoga Creek
  - 3 Harenstine Creek
  - 4 Mine Run
  - 5 Possum Hollow Run
  - 6 Brooke Evans Creek
  - 7 Lodal Creek
  - 8 Tributaries to Schuylkill
  - 9 Mingo Creek
  - 10 Schoolhouse Run





**Montgomery  
County Preserved  
Farmland – Misty  
Knoll Farm**





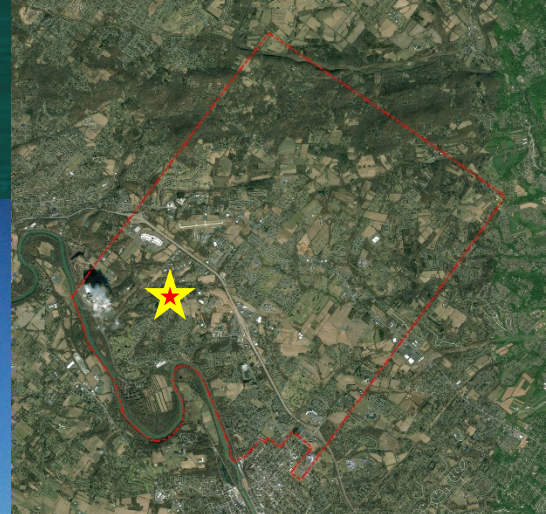
Trinley Park





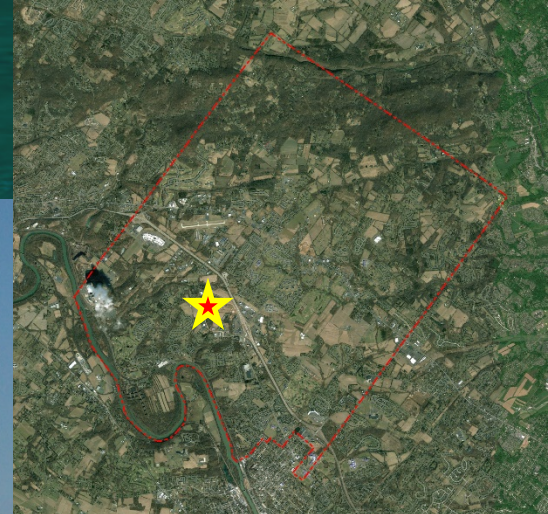
**Linfield Sports  
Park**





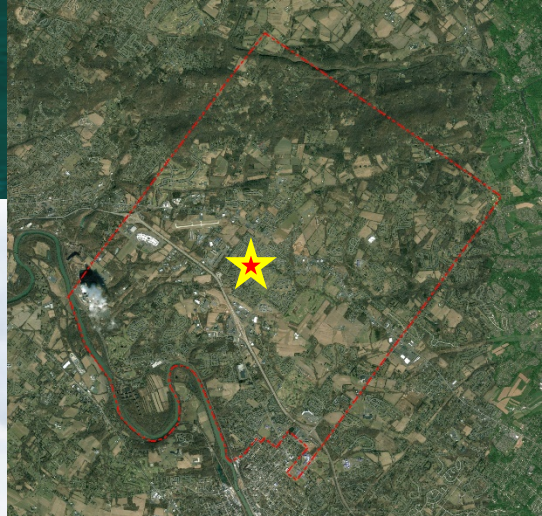
**Philadelphia  
Gaelic Athletic  
Association  
Field Complex –  
presently not on  
open space plan**





**Pottstown Vortac  
Weather Station –  
currently  
surrounding land  
is not preserved**

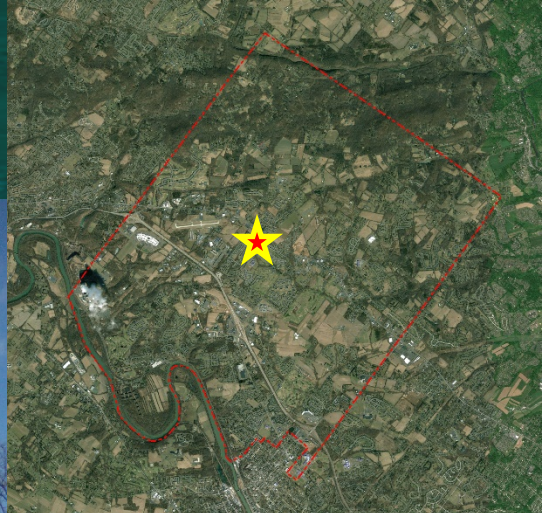




**Limerick  
Community Park**

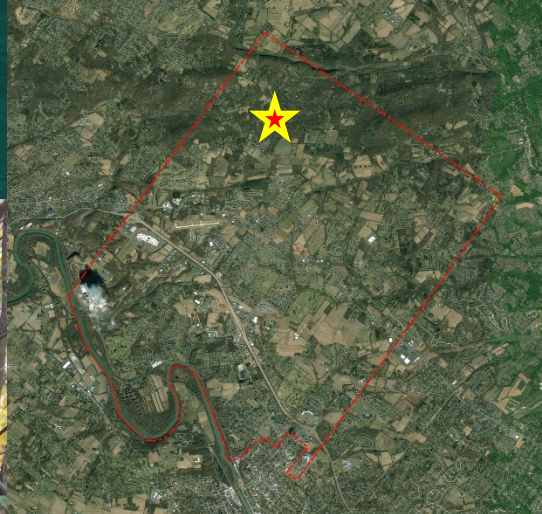


T  
O  
W  
N  
S  
H  
I  
P  
  
T  
O  
U  
R



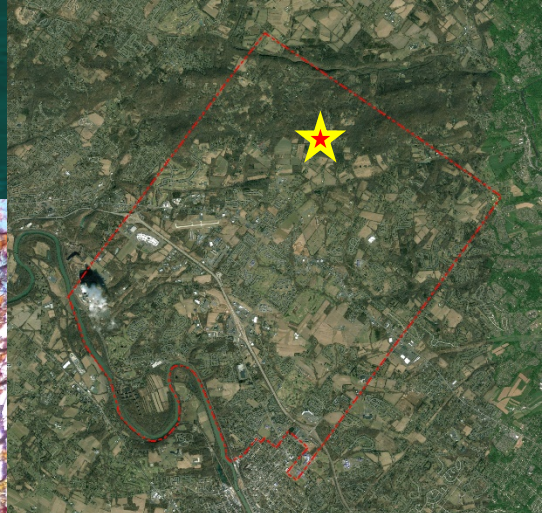
Kurylo Preserve





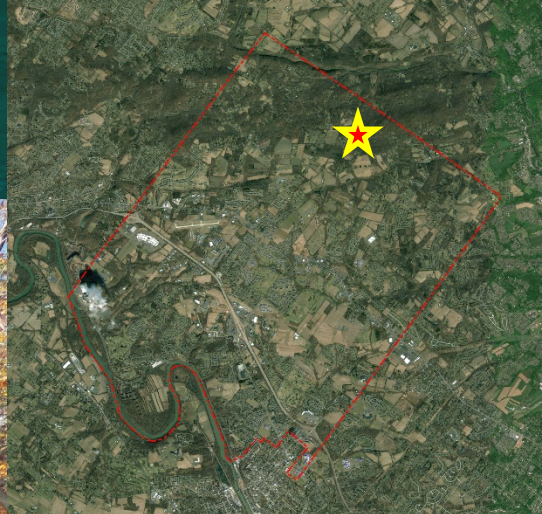
**Stone Hills  
Wildlife Preserve**





**Grebe Road –  
scenic road**





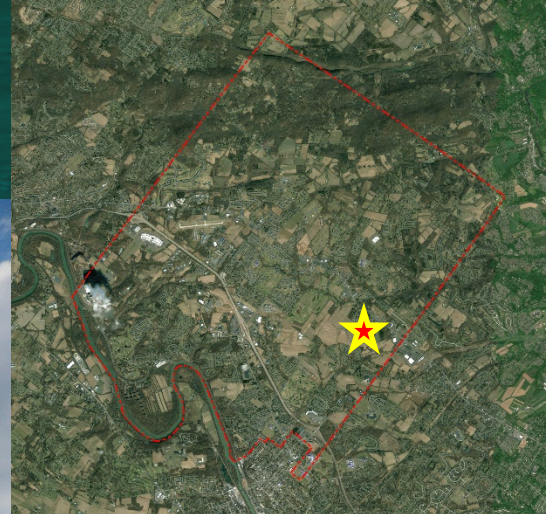
**Historic  
Herstein's  
Mennonite  
Church building -  
1803**





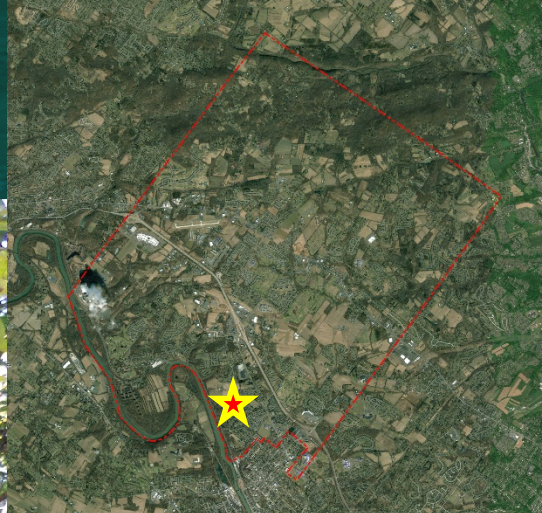
**Trail into Eva R.  
Meng Wildlife  
Preserve and Bird  
Sanctuary**





**West-Mont United  
Soccer  
Association  
Hilltop Farm  
Soccer Complex**





**Schuykill  
tributary – not on  
preserved land**



# Your Ideas, Comments, Suggestions...

## GOALS

GOALS FOR THE PROJECT - initially broad, then specific: "Develop Priority List" or "Provide for the open space needs of all age and abilities groups".

"

FACTS - Existing land use, site conditions, outstanding natural resources, adjacent properties, existing trails, nearby open space sites, partners.

## FACTS

## CONCEPTS

IDEAS FOR ATTAINING PROJECT GOALS - "Connect to existing trail systems", or "Preserve Rural Areas" "Develop Mission Statement"



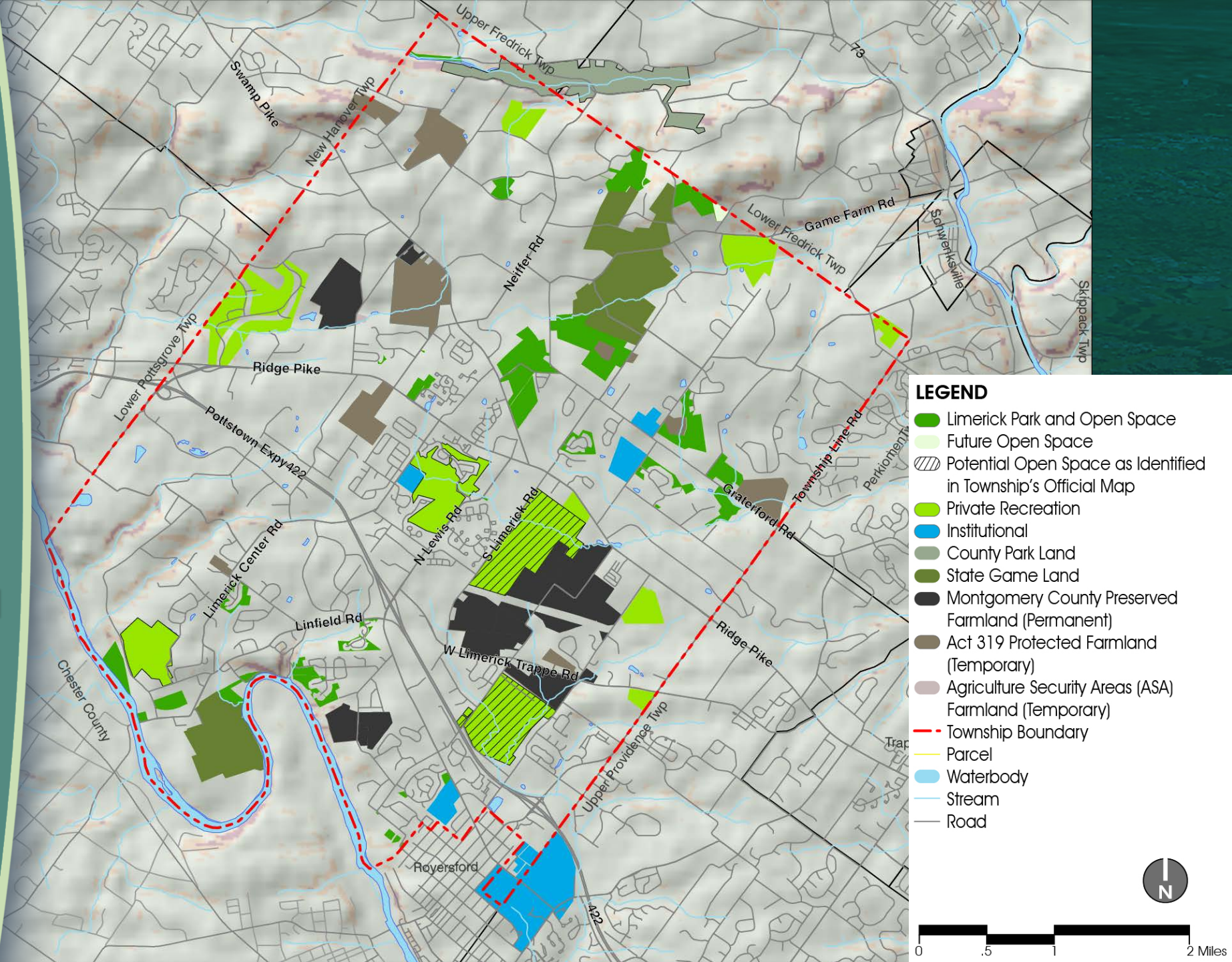
# Your Ideas, Comments, Suggestions...

## BRAIN STORMING

<u>GOALS</u>	<u>FACTS</u>	<u>CONCEPTS</u>	<u>PARTNERS</u>
PROVIDE FOR ALL AGES	SOME STATE GAME LAND USED FOR FARMING	STRENGTHEN ZONING TO PROTECT OPEN SPACE	DCNR
ESTABLISH PRIORITIES	EXISTING TRAILS	PRESERVE SCHUYLKILL RIVERFRONT	COUNTY
PRESERVE RURAL CHARACTER	EXISTING OPEN SPACE	PRESERVE MORE FARMLAND	LOCAL BUSINESSES



# OPEN SPACE MAP





## Next Meeting:



Committee Meeting #1	Thursday, October 17th	7:00 - 8:30 PM
Public Meeting #1	Thursday, November 7th	7:00 - 9:00 PM
Committee Meeting #2	Thursday, January 9th	7:00 - 8:30 PM
Public Meeting #2	Thursday, February 6th	7:00 - 9:00 PM
Committee Meeting #3	Thursday, April 9th	7:00 - 8:30 PM
Public Meeting #3	Thursday, May 7th	7:00 - 9:00 PM
Committee Meeting #4	Wednesday, June 3rd	7:00 - 8:30 PM
BOS (Public Meeting #4)	Tuesday, June 16th	7:00

Take the online public opinion survey:

<https://www.surveymonkey.com/r/LimerickOSP>

Visit the Township website for additional information and updates:

<https://www.limerickpa.org/367/Open-Space-Update-Plan>



# Thank you,

## Simone Collins Landscape Architecture

**Peter M. Simone, RLA, FASLA, Principal**

[psimone@simonecollins.com](mailto:psimone@simonecollins.com)

**Sarah R. Leeper, RLA, Project Manager**

[sleeper@simonecollins.com](mailto:sleeper@simonecollins.com)

**Rob Gladfelter, Project Landscape Architect**

[rgladfelter@simonecollins.com](mailto:rgladfelter@simonecollins.com)