

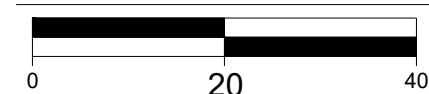


LAYOUT COORDINATE SCHEDULE			
POINT #	NORTHING	EASTING	DESCRIPTION
101	333,651.55	2,574,153.77	BUILDING CORNER
102	333,609.21	2,574,211.18	BUILDING CORNER
103	333,551.80	2,574,168.85	BUILDING CORNER
104	333,594.13	2,574,111.43	BUILDING CORNER



CALL BEFORE YOU DIG!
1 - 8 0 0 - 2 4 2 - 1 7 7 6
 PENNSYLVANIA LAW REQUIRES
 3 WORKING DAYS NOTICE FOR
 CONSTRUCTION PHASE AND 10 WORKING
 DAYS IN DESIGN STAGE - STOP CALL
 POC SERIAL NUMBER
20250150862

SCALE: 1" = 20'



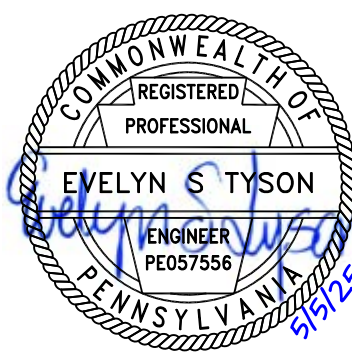
1. FOR LEGENDS AND GENERAL CIVIL NOTES SEE SHEET C-001.
2. THE CONTRACTOR SHALL VERIFY THE FINAL PAD SIZE WITH FINAL ELECTRICAL AND MECHANICAL EQUIPMENT TO BE INSTALLED.
3. ALL CONSTRUCTION SHALL BE DONE IN ACCORDANCE WITH LIMERICK TOWNSHIP'S IMPROVEMENTS CONSTRUCTION MANUAL, LATEST REVISION, AND ALL OTHER STATE, LOCAL AND FEDERAL REGULATIONS.

1. BITUMINOUS PAVING. REFER TO DETAIL ON SHEET C-511.
2. CONCRETE BUILDING STAIRWAY WITH GUARDRAIL. DESIGN BY OTHERS.
3. PIPE BOLLARD. REFER TO DETAIL ON SHEET C-511.
4. CONCRETE PAD FOR MECHANICAL EQUIPMENT. DESIGN BY OTHERS.
5. CONCRETE PAD FOR ELECTRICAL TRANSFORMER. DESIGN BY OTHERS.
6. LAWN RESTORATION AREA. REFER TO PERMANENT SEEDING SPECIFICATIONS ON SHEET C-703.
7. CONCRETE APRON. DESIGN BY OTHERS.
8. PARKING SPACES TO BE BLOCKED OFF USING TRAFFIC CONES PRIOR TO ENTERING/EXITING THE NORTH GARAGE DOOR ON AN AS NEEDED BASIS.

1. ALL CONTRACTORS WORKING ON THIS PROJECT SHALL COMPLY WITH REQUIREMENTS OF P. L. 852, NO. 287, DECEMBER 1974 AS AMENDED ON OCTOBER 9, 2008 BY PENNSYLVANIA ACT 121 ENTITLED UNDERGROUND UTILITY LINE PROTECTION ACT.
2. PRIOR TO BEGINNING ANY EXCAVATION WORK IN PROXIMITY TO AN UNDERGROUND UTILITY LINE, THE CONTRACTOR SHALL CONTACT THE RESPECTIVE UTILITY TO INFORM THEM, IF REQUESTED BY THE UTILITY. NO EXCAVATION WORK SHALL BEGIN UNTIL A REPRESENTATIVE IS ABLE TO BE ONSITE.
3. THE CONTRACTOR IS RESPONSIBLE FOR CONTACTING THE PENNSYLVANIA ONE CALL SYSTEM (PHONE: 1-800-242-1776) THREE WORKING DAYS IN ADVANCE OF ANY EXCAVATION FOR THE MARK-OUT OF THE LOCATION OF UTILITIES AND NOTIFICATION OF COMMENCEMENT OF WORK. IT IS THE RESPONSIBILITY OF THE CONTRACTOR TO MAINTAIN ALL UTILITY MARKINGS WITHIN THE PROJECT LIMITS FOR THE DURATION OF THE PROJECT. IF UTILITY MARKINGS ARE OBLITERATED, THE CONTRACTOR IS RESPONSIBLE FOR CONTACTING PA ONE CALL FOR MARK-OUT.
4. CONTRACTOR WILL MAKE EXPLORATION EXCAVATIONS AND LOCATE ANY UNKNOWN UNDERGROUND FACILITIES SUFFICIENTLY AHEAD OF CONSTRUCTION TO PERMIT REVISIONS TO PLANS IF REVISIONS ARE NECESSARY OR TO REQUEST THE RELOCATION OF THE EXISTING FACILITY BY THE UTILITY. NOTIFY THE ENGINEER OF WORK IF ANY DISCREPANCIES IN UTILITY LINE LOCATIONS ARE FOUND. THE COSTS FOR THE EXPLORATION WORK SHALL BE INCIDENTAL TO THE ITEMS INCLUDED IN THE CONTRACTOR'S PROPOSAL.
5. THE CONTRACTOR IS SPECIFICALLY CAUTIONED TO TAKE MEASUREMENTS OF UTILITY LOCATIONS IN THE FIELD, AND TO TAKE PRECAUTIONARY MEASURES TO PROTECT THE UTILITY LINES SHOWN HEREON AND ANY OTHER EXISTING LINES NOT OF RECORD OR NOT SHOWN ON THESE PLANS.
6. ALL EXCAVATIONS SHALL BE ADEQUATELY TEMPORARILY SHORED, AS DESIGNED BY A PROFESSIONAL ENGINEER, OR THE SLOPING OF THE EXCAVATION WALLS SHALL COMPLY WITH OSHA STANDARDS, AS DETERMINED BY A QUALIFIED, COMPETENT PERSON.
7. THE CONTRACTOR SHALL BE RESPONSIBLE FOR PROPERLY BACKFILLING AND COMPACTING ALL TRENCHES. NO TRENCHES ARE TO BE LEFT OPEN AFTER COMPLETION OF WORK FOR THE DAY. ALL CONSTRUCTION AREAS ARE TO BE KEPT IN A CONDITION THAT ALLOWS FOR SAFE MOVEMENT OF BOTH VEHICULAR AND PEDESTRIAN TRAFFIC. ANY EXCESS MATERIAL FROM TRENCHING SHALL BE DELIVERED TO A LAWFUL SITE LOCATION BY THE CONTRACTOR. DOCUMENTATION OF PROPER DISPOSAL SHALL BE RECEIVED AT COMPLETION.
8. NO UNSUITABLE MATERIAL IS TO BE USED IN ANY PORTION OF THE PERMANENT TRENCH RESTORATION. REMOVE ANY SUBGRADE THAT CANNOT BE PROPERLY COMPACTED AND THAT IS UNSUITABLE MATERIAL. UNDERCUTTING AND/OR SUBGRADE STABILIZATION MAY BE REQUIRED.
9. THE CONTRACTOR SHOULD CONTACT THE ENGINEER BEFORE PROCEEDING WITH CONSTRUCTION IF THERE ARE ANY DIFFERENCES BETWEEN THE FIELD CONDITIONS AND BASE SURVEY SHOWN ON THE PLANS.
10. ALL STRUCTURAL BACKFILL SHALL BE IN COMPLIANCE WITH PENNDOT PUBLICATION 72M STANDARD RC-12M, OR MANUFACTURER REQUIREMENTS.

Site map of the proposed 100 MW solar PV farm. The map shows the 'SITE' area, 'MAIN OPERATIONS BUILDING', 'COOLING TOWERS', 'WATER BASIN', 'WATER TOWER', 'PERSIMMON POLLOP POND', 'VEEN POND', 'LONGVIEW CREEK', 'PINEY CREEK', and 'LONGVIEW BRIDGE'. A north arrow is in the top right corner.

REVISIONS		
MARK:	COMMENT:	DATE:
B	REVISED PER TOWNSHIP REVIEW LETTER	05/05/2025
A	TOWNSHIP SUBMISSION	02/05/2025



STULETE INI
LIMERICK TOWNSHIP, MONTGOMERY COUNTY, PENNSYLVANIA

SITE LAYOUT PLAN

PREPARED FOR
CONSTELLATION ENERGY GENERATION, LLC

PROJECT NAME
GENERATOR ROTOR STORAGE BUILDING

DESIGNED BY: EMD
 DRAWN BY: SAS
 CHECKED BY: EST
 PROJECT NO. 0109-24-223
 DATE: 01/31/2025
 SCALE: 1" = 20'
 SHEET 6 OF 12

C-111