

SUMMER

Limerick T☘OWNSHIP

2025

YOUR SAFETY
IS OUR
PRIORITY



Township Supervisors & Staff Members, along with First Responders, unveil new 911 Trail Wayfinding signs along the Tullamore Trail.

*Find the hidden shamrock! (This is the exact size & color you are looking for...☘).
See the back page for more information. Have fun in your search!*



Kenneth W. Sperring, Jr.
Chairman

The newly installed Trail Wayfinding signs, highlighted in this newsletter, are another example of the Township's commitment to the public safety needs of our residents. These new signs can be used by trail users to identify their location to the 911 system, in the case of an emergency, as every second counts.

Over the next several months, additional Trail Wayfinding signs will be placed on all the main trails throughout Limerick to ensure our first responders can provide their emergency services as quickly as possible.

The ability of our emergency personnel to quickly respond can only occur if an investment in their "readiness" is also prioritized. The most critical component of this objective is the necessary equipment, apparatus, facilities, and training needed by the police, fire, and emergency medical departments to be on standby for any type of emergency.

When the 911 call is made, we want our first responders to have the most modern and technically advanced equipment at their disposal.

This requires significant financial investment; through strict adherence to the Township Business Plan, Limerick can equip all emergency departments without an undue burden on the taxpayers of this community. The principal objective of the Business Plan is to limit the tax burden of our residents and towards this objective, it is important to note that General Fund real estate taxes have not increased since 2016.

Additionally, the Township's total tax millage rate, which includes the General Fund, Fire, EMS, Fire Hydrant, and Park taxes, has remained in the lower half of all 62 Montgomery County Communities, for many years.

Limerick's Business Plan, and the ability to maintain lower than average taxes, is centered around the sale of the Township Sewer System in 2018. The Business Plan prioritizes the protection of the invested Sewer Sale Reserve Funds, so interest earnings can provide a continuous alternate non-tax revenue source that reduces the overall tax burden of this community. In 2024, the Reserve Funds earned over \$1.8 Million in interest earnings, which were used to offset General Fund tax obligations by 26%!

Sewer Reserve Funds are also used for long-range capital project investments. This newsletter highlights the investments made in public safety and in the park system, without the need for additional taxes because of the sale of the sewer system.

Whether the need will be for the road system, parks and open space, or our emergency services, the Township is financially well-positioned to ensure the future property tax burden remains low for all within our entire Limerick community.

I wish you a wonderful summer season.

- Ken

Limerick Township's Business Plan

MAINTAINING LOW TAXES

1. **INTEREST EARNED** from the 2018 sewer sale provides an alternative funding source to the General Fund.



2. Thus **REDUCING** the tax burden by 26%.



3. Limerick's business plan offers a solution to the growing burden of property taxes, easing the strain on our residents; especially our seniors who need support to remain in their homes.

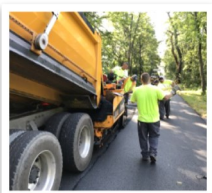
County and
School District's
portion
91.7¢



Limerick
Township's
portion only
8.3¢



4. Essential services are being provided while keeping taxes low, ensuring the continuity of critical services.



Public Works



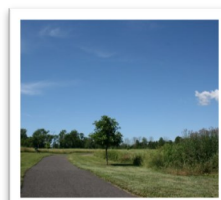
Police



EMS



Fire



Parks



Cow Plop Bingo

On a beautiful May morning, many gathered to cheer on bovine Lily, to make what they hoped would be a winning "deposit" on their bingo square.

Lily was obviously at ease with the onlookers and took her sweet old time getting down to business. 47 minutes after her arrival time, she graced square No. 285. The grand prize winner of \$1,000 was awarded to Allison P.!

Auntie Anne's Pretzels, flowers for Moms, facepainting for kids, and entertainment for all, made our Tricentennial's first fundraiser a great success!



Tricentennial Silver & Platinum Sponsors

If you would like to be a participating Tricentennial sponsor, please go to our website or give us a call!



Rebecca & JP Steiner



Physicians Care
Surgical Hospital



KEYSTONE
SALES & ASSOCIATES



FRANKLIN
FLOORING inc.



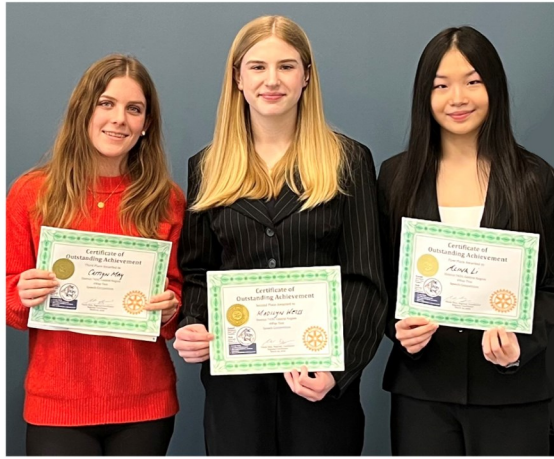
Rotary International's 4-Way Speech Contest

Every year, Rotary districts around the world sponsor high school 4-Way Speech contests. The purpose of the speech is to persuade others while applying the principles of Rotary International's 4-Way Test: Is it the truth? Is it fair to all concerned? Will it build goodwill and better friendships? Will it be beneficial to all concerned?

The contest aims to promote ethical behavior, improve public speaking skills, and foster a deeper understanding of Rotary's core values. On March 22, Limerick Township, who is a proud partner with the Spring-Ford Rotary Club, hosted the Regional Level Competition with three students who advanced from the local level.

Alina Li from Spring-Ford took 1st place and advanced to the District Finals in Hershey where she placed 4th.

Congratulations, Alina!



Caitlyn May, Madilyn Weiss, & Alina Li

Limerick Township receives Communication Award

During the PSATS (Pennsylvania State Association of Township Supervisors) Conference held in Hershey in May, Limerick Township's Newsletter received 2nd place in the Citizen Communication Contest.

Submitted newsletters from all over Pennsylvania were judged based on their content, clarity, and appeal. We are very proud of the positive feedback we have received and will endeavor to bring home a 1st place win in the future!



Investing in your Safety Limerick's Business

Long-range capital benefits of the 2018 Sewer Sale (listed in billions)

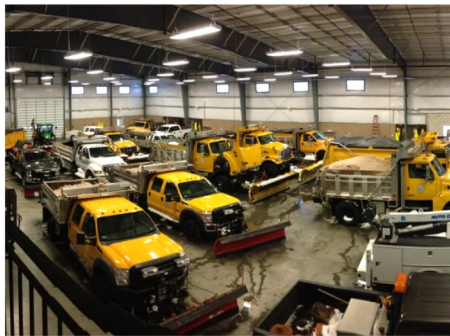


Trail Wayfinding Signage

Currently, Limerick Township has over 10 miles of trails. One new enhancement is the development of a comprehensive trail signage library with signs that will enable 911 operators to quickly locate and dispatch assistance to trail users in the event of an emergency.

The first trail to implement these signs is the newly named "Tullamore Trail" (formerly known as the PECO Trail). The Tullamore Trail runs between Limerick Center and Royersford Roads. Additional signage will soon be installed on all major trails.

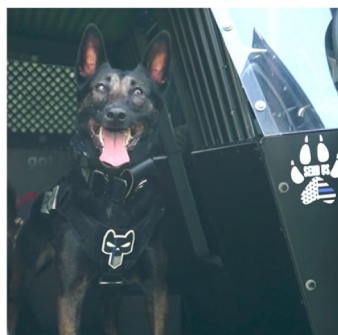
\$260K used to expand Trail Network



Maintaining Township Roadways & Property

The Public Works Department is responsible for the year-round maintenance of 206 lane miles of Township-owned roads, to ensure a safe road system for the motoring public.

\$5.4M used for Equipment, Road Improvements, and Facility Upgrades



To Serve & Protect

The Police Department is a multi-functional organization that is both proactive & community-oriented and endeavors to be a professional and successful problem solver.

It provides many services to the community, including crime prevention programs and safety presentations to various groups.

\$11M used for Vehicles, Safety Equipment, and Facility Upgrades



These e
service
provide
only 8.3
Lime
Real E
tax d

Community: from Trails to Home

Business Plan at work

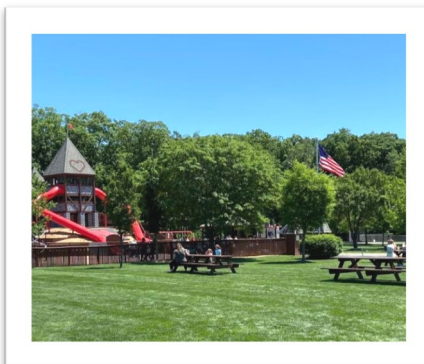
(value) that have occurred without the need for additional taxes.

Park Improvements and Open Space

Open spaces provide crucial ecosystem services by reducing pollution and supporting biodiversity.

Our parks provide vital opportunities for physical activity, relaxation, and social interaction, improving both mental and physical health.

Parks foster community engagement and can increase surrounding property values, contributing to economic vitality.



\$2.6M used for Parks & Open Space; includes \$1.5M for the planned rebuild of Manderach Playground



Essential
services are
provided with
a portion of your
Limerick
State
tax dollar.

Protecting Life and Property

The Limerick Fire Department (a tax savings of \$4M - \$5M annually thanks to the all volunteer force) provides fire and rescue services to Limerick Township, and the surrounding communities.



The fire department not only responds to emergency calls, but participates in training, apparatus, equipment, and facility maintenance, as well as fundraising and community events.

\$6M used for Equipment & Facilities

Hour of Need

Emergency Medical Services remain strong and vibrant within the Township, considering the current EMS crisis within the State of Pennsylvania that has caused many to close their doors.

All residents are now covered as subscribing members of EMS agencies serving this community.



\$1.1M used for Fleet & Equipment Improvements

Boating Safety

Life Jackets Save Lives!



Boating safety advocates recommend that all boaters and passengers not only have a life jacket, but wear it at all times while boating. Accidents on the water happen too fast to reach and put on a stowed life jacket.

75%

of boating deaths are
due to drowning

87%

of victims NOT
wearing a life jacket

2/3

of drowning victims
are good swimmers



WEAR IT

A program of the National Safe Boating Council



Solicitation in the Township

Pennsylvania law requires that all municipalities allow lawful solicitations. To help keep everyone safe, Limerick Township has a Peddling/Solicitation Ordinance which requires a solicitation license for most vendors: window, siding or paving companies, energy providers, etc.

Applicants must apply in person with the Township, pay a fee, and provide a government-issued photo ID. After a background check, each solicitor is issued his/her own individual solicitation license card. Solicitors **MUST** carry their license with them at all times. More information can be found on our website.

In an effort to limit unwanted solicitations, the Township has created a "Do not solicit" list that residents can sign up for. To sign up for the list, please scan here:



This list is given to permitted solicitation companies to advise them of who does not want solicited. You can also place "NO SOLICITATION" signs at the end of your driveway or at your door.



NOTE: Non-profit groups, religious organizations, and political affiliates are **EXEMPT** from the solicitation rules and therefore can approach any residence.

New Team Members



Christopher DeFrancesco - Highway Division

In my position at the Township, most of the work load is fairly new to me, but I worked in construction my whole life and am used a lot of the tools and equipment that Limerick has to offer.

One thing that interested me about the position was that I know a lot of the guys that work here. Coming into a work environment where I know multiple people (I even had some of them as coaches) encouraged me to apply here. I also knew getting the opportunity to work for a big township would be a good career option.

In my free time I like to go fishing and hang out with friends.

FUN FACT: *One interesting fact about me is that I like to try new restaurants.*



Nicholas Green - Highway Division

I learned how to be a mechanic while working at Wunderlich Garage for 7 years. While I was there, I had the chance to work on some of the Township's equipment.

What really interested me in the Township was the quality of the equipment, caliber of work, and the friendly employees.

The trucks were always clean when they came in and well maintained, and the people I got to interact with were some of the nicest people I have met.

In my free time, I like to go hunting, fishing, off-roading, and work on cars.

FUN FACT: *I go to Canada at least once a year for vacation.*



Limerick Township Historical Society

As part of the 300th anniversary of Limerick Township, the Historical Society plans to create a commemorative quilt.

Contact the Historical Society with suggestions for subjects to include on the quilt.



If you would like to participate in creating the quilt by stitching, embroidering, or quilting, please contact us.

Then please contact us at
(610) 495-5229,

www.LimerickPAHistory.org,

or stop by.

SPRINGTIME FUN!



Upcoming events:

- June* 25 **Active Adult** - COFFEE TALK ☕
 26 **Community Event** - CONCERT IN THE PARK 🎵
 29 **Community Event** - GIFT CARD BINGO

- July* 2 **Preschool** - LITTLE CHEFS
 18 **Community Event** - MOVIE IN THE PARK
 23 **Active Adult** - COFFEE TALK ☕
 24 **Community Event** - CONCERT IN THE PARK 🎵

- August* 14 **Community Event** - CONCERT IN THE PARK 🎵
 16 **Community Event** - LIMERICK COMMUNITY DAY
 19 **Preschool** - SCIENCE PROGRAM
 27 **Active Adult** - COFFEE TALK ☕

- September* 4 **Active Adult** - GIFT CARD BINGO
 10 **Preschool** - WESTERN PROGRAM
 24 **Active Adult** - COFFEE TALK ☕
 27 **Community Event** - LIMERICK UNCORKED
 28 **Youth** - BABYSITTERS CLINIC

Summer/Fall Sports sign-ups for:
 NFL Flag Football, Dolton Sports, & Skyhawk Sports.
 Summer Specialty Camp Registration is still available.



Bus Trips!

- Oct. 16 **Jim Thorpe Fall Foliage** - Registration begins 7/1/25
 Dec. 6 **Day in New York City** - Registration begins 9/1/25



For up-to-date information on all Limerick Township Parks and Recreation events, programs, camps and more, please visit the Township website or our Facebook page. Please be advised that dates and times for events and programs are subject to change.

Scan this code to register for an upcoming event, or visit:
www.LimerickPA.org/155/-Recreation

Limerick Township

646 West Ridge Pike
Limerick, PA 19468

PRSRT STD
U.S. POSTAGE
PAID
PERMIT NO. 245
SEPA 19399

*If you find the hidden shamrock,
send us an email by **6/20/25**.*

*You will be entered into a
drawing for a gift card!
(One entry per household please).*

**Please send us your name
and location of the shamrock to:
Contest@LimerickPA.org**

*The winner will be announced
in the next newsletter
and on our Facebook page.*

**Congratulations goes to
Marquise Ward for finding the
shamrock in our Spring Newsletter!
Marquise won a \$50 gift card to
[Achin' Back Garden Center](#).**

***(Its location was on page 3;
bottom photo, in the trees,
to the left of the castle.)***



Limerick Township Board of Supervisors

(From left to right):

Linda Irwin (Vice-Chair)
Kenneth W. Sperring, Jr. (Chair)
Patrick M. Morroney,
Michael J. McCloskey, III
and Kara Shuler

Monthly Public Meetings are held at:

The Limerick Township
Municipal Building
646 West Ridge Pike
Limerick, PA 19468
(610) 495-6432
www.LimerickPA.org

Board of Supervisors

1st & 3rd Tuesday of each month
7:00pm

Planning Commission

2nd Thursday of each month
7:00pm

Zoning Hearing Board

4th Wednesday of each month
6:30pm



COFFEE TALK

MARCH 26TH - RYAN WALL TAX COLLECTOR, REBATES

APRIL 23RD - SCAMS & FRAUDS USING ARTIFICIAL INTELLIGENCE

MAY 28TH - VISITING ANGELS

JUNE 25TH - KRISTINE PARKES, SKELETON KEY GENEALOGY

JULY 23RD - FOREVER FIT & WELLNESS

AUGUST 27TH - STEVE LYBRAND, IMPORTANCE OF ESTATE PLANNING

**SEPTEMBER 24TH - JAKE TALLEY MENTAL HEALTH: ANXIETY,
DEPRESSION, STRESS AND CBT**

OCTOBER 22ND - ARCADIA AT LIMERICK POINTE

**PLEASE CALL 610-495-6432 OR EMAIL
ASHLEYK@LIMERICKPA.ORG TO REGISTER**

MUST BE PRE-REGISTERED TO RECEIVE BREAKFAST





LIMERICK MUSIKGARTEN

MAY 1ST

10:00AM



AGES 15 MONTHS - 6 YEARS OLD



\$10.00 PER CHILD





LIMERICK TOWNSHIP
Parks
& RECREATION

TRIVIA

Tease Your Brain &
Win A Prize

Friday
May 2

10AM

Limerick Township Building
646 W. Ridge Pike
Limerick, PA 19468

To Register visit our website or
call 610-495-6432

www.limerickpa.org

LIMERICK TOWNSHIP PARKS & RECREATION



SCIENCE FUN DAY!
SATURDAY, MAY 10TH
10:00 AM - 12:00 PM
LIMERICK TOWNSHIP BUILDING
AGES 5-12

DISCOVER DETECTION - MOVIE FX

\$20.00 (PRE-REGISTRATION REQUIRED)
PARENTS DO NOT NEED A TICKETS TO ATTEND

Sponsored By:

PLATINUM
PLUMBING - HEATING
AIR CONDITIONING



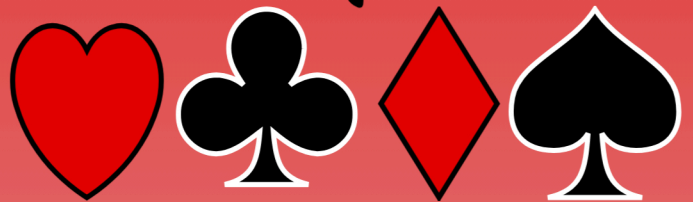
ATLANTIC CITY
Join Us For A

CASINO



BUS TRIP

May 13th



\$45.00 per person

Price Includes:

\$25.00 Bally's Slot Play



Depart: Limerick Township Building 9:00 am
Arrive: Atlantic City, Bally's Casino 11:00 am
Depart Atlantic City, Bally's Casino 5:00 pm
Arrive: Limerick Township Building 7:00 pm



Sponsored by:



Collegeville: 610-489-5900

Pottstown: 610-326-1200

AchieversPA.com



ULTIMATE FRISBEE SCHOOL HOLIDAY CAMP

LIMERICK COMMUNITY PARK

TUESDAY, MAY 20TH

FULL- & HALF-DAY OPTIONS

WHY SIGN UP?

- PROFESSIONAL COACHING
- SKILL DEVELOPMENT
- TEAM BUILDING
- FUN ACTIVITIES

WHO CAN JOIN?

- ALL GENDERS
- AGES 7-15
- ALL SKILL LEVELS

REGISTRATION

 WWW.PHOENIXULTI.COM



CHECK OUT ALL THE FUN



Limerick Township Parks & Recreation

The Greatest Concert Tribute To Elvis

Starring

Bob Humel



Thursday, May 29th
7:00 PM

Limerick Community Park
Main Pavilion



Sponsored By:



ROCKIN' ICE CREAM BASH

WHEN: SATURDAY, MAY 31ST

TIME: 11:00AM

LOCATION: SCOUPE DEVILLE





LITTLE CHEFS

ice cream

JUNE 2ND

11AM

BRUSTERS ICE CREAM

AGES 2-5

\$10 PER CHILD

**PRE-REGISTRATION
REQUIRED**



LIMERICK TOWNSHIP
Parks
& RECREATION



DELICIOUS

Ice Cream Social

ACTIVE
ADULTS

JUNE 4TH
2:00PM



\$2

460 N. LEWIS ROAD ROYERSFORD, PA 19468



HOUSEHOLD HAZARDOUS WASTE

2025 MONTGOMERY COUNTY, PA RESIDENTIAL EVENTS

By Appointment Only. Preregistration is Required.

Register at www.MontcoPARecycles.org

DATES:

Saturday, April 26

Indian Valley Middle School

130 Maple Avenue, Harleysville

Saturday, June 7

Temple University–Ambler Campus

Enter at 1431 E. Butler Pike, Ambler

Saturday, June 21

Norristown Area High School

1900 Eagle Drive, Norristown

Saturday, June 28

Abington Middle School

Enter at 2056 Susquehanna Road, Abington

Saturday, September 20

Spring-Ford 9th Grade Center

400 South Lewis Road, Royersford

SUNDAY, October 12

Lower Merion Transfer Station

1300 N. Woodbine Avenue, Penn Valley

Free residential collection events are held outdoors. There are no permanent drop off locations, only these collection events. Montco residents may also attend any Household Hazardous Waste event held by [Bucks](#), [Chester](#), [Delaware](#), or [Philadelphia](#) Counties.

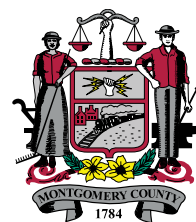
Please do not contact the host sites, as they are not affiliated with the events.

In case of severe weather, call 610.278.3618, option 6 for event status.

Contact us at:

Recycling@MontgomeryCountyPA.gov

610.278.3618



ACCEPTABLE HOUSEHOLD MATERIALS

PAINT PRODUCTS	OUTDOOR PRODUCTS	AUTOMOTIVE PRODUCTS	HOUSEHOLD PRODUCTS	HOUSEHOLD OTHER
Turpentine	Swimming Pool Chemicals	Grease & Rust Solvents	Drain Openers	Acids, Caustics, Solvents
Paint Thinners	Weed Killers	Fuel Additives	Rug Cleaners	Flammables
Strippers & Removers	Septic Tank Degreasers	Carburetor Cleaners	Wood & Metal Cleaners	Oxidizers, Reactives
Oil-Based Paints	Asphalt Sealers	Transmission/Brake Fluid	Mothballs/Flakes	Aerosols
Stains, Varnish	Caulking Compounds	Antifreeze	Adhesives/Solvents	Mercury (Thermostats & Thermometers)
Shellac	Joint Compound	Car(lead-acid), Truck, Motorcycle, Marine, Batteries	Rechargeable Batteries, Lithium, Ni-Cad, Button, Lead Acid	Fluorescent Tubes and CFLs
Other Solvent-Based Paint Products	Roof Cements	Gas, Oil, Gas Oil Mixture	Spot Removers, Dry Cleaning Fluid	Ballast (must be removed from light fixture)
Wallpaper Cement	MINI Propane Tanks, No BBQ Tanks	Road Flares, No Marine Flares	Fire Extinguishers	Electric Oil-filled Heaters
Spray Paint	Pesticide		Kerosene	

UNACCEPTABLE MATERIALS

Explosives & Ammunition	Electronics/Televisions	Asbestos	Appliances/White Goods
Infectious or Medical Waste, Prescription Drugs	BBQ-Sized Propane Tanks (leave at local exchange sites)	Radioactive Waste	Freon/Refrigerants
Tires	Helium Tanks	Unidentified Waste	25- or 50-Gallon Drums
Latex Paint* (Water-Based)	Gas Cylinders	Alkaline Batteries (Trash)	Smoke Detectors

* Take off lid, dry out paint, discard can without lid; or pour paint into plastic bag with absorbent material (clay based kitty litter, saw dust, rags) place bag and can without lid, in trash. Paint hardener can also be purchased at hardware stores.

DROP OFF GUIDELINES

- Leave items at home that are not for the event so that they are not removed accidentally.
- If you need your gas can or container returned, please tape a note to it stating that you want to keep it.
- You may arrive any time within your registered appointment window.
- Please print out your ticket or write your name and appointment time on a piece of paper, **and place it on your dashboard where it is visible to event staff.**
- If you cannot attend the event, please cancel your appointment through your Eventbrite ticket or by emailing Recycling@MontgomeryCountyPA.gov, as others may be waiting for an opening.
- NO TVs, electronics, or appliances will be accepted.
- Event workers will unload your materials so please remain in your vehicle.
- **BUSINESSES AND CONTRACTORS WILL BE TURNED AWAY**, no commercial/industrial waste accepted.
- Bring all substances in original containers with labels. Items must be identifiable. Do not mix materials.
- Tighten lids on all containers. If containers are leaking, pack in larger container with newspaper to soak up leaks.
- **NO 25- OR 50-GALLON DRUMS ALLOWED.** Five-gallon buckets are the largest acceptable container. Maximum amount accepted per vehicle is 25 gallons or 220 pounds.
- There are no permanent drop off locations in the region for household hazardous waste, only the listed collections.

2025 SOUTHEASTERN PA REGIONAL HOUSEHOLD HAZARDOUS WASTE EVENTS

Visit the host county websites below for registration information and event details. No Electronics Accepted. No businesses or contractors, household material only.

Events are open to residents of Bucks, Chester, Delaware, and Montgomery Counties and Philadelphia regardless of the host county.



DATE	DAY	COUNTY	LOCATION
April 5, 2025	Saturday	Bucks	Bucks County Community College, 275 Swamp Road, Newtown
April 5, 2025	Saturday	Philadelphia	Streets Dept. Training Center, 8401 State Road at Ashburner Street, Philadelphia
April 12, 2025	Saturday	Chester	Technical College High School, 1580 Charlestown Road, Phoenixville
April 12, 2025	Saturday	Delaware	Emergency Services Training Center, 1600 Calcon Hook Road, Sharon Hill
April 26, 2025	Saturday	Montgomery	Indian Valley Middle School, 130 Maple Avenue, Harleysville
May 10, 2025	Saturday	Philadelphia	1st District Highway Yard, 4800 Parkside Avenue, Philadelphia
May 10, 2025	Saturday	Delaware	Rose Tree Park, 1671 North Providence Road, Media
May 31, 2025	Saturday	Bucks	Upper Bucks County Area Vocational Technical School, 3115 Ridge Road, Perkasie
June 7, 2025	Saturday	Montgomery	Temple University–Ambler Campus, enter on 1431 E. Butler Pike, Ambler
June 14, 2025	Saturday	Philadelphia	Northwest Transfer Station, 320 Domino Lane, Philadelphia
June 20, 2025	FRIDAY	Chester	Coatesville CCIU Center, 1635 E. Lincoln Highway, Coatesville
June 21, 2025	Saturday	Montgomery	Norristown Area High School, 1900 Eagle Drive, Norristown
June 28, 2025	Saturday	Montgomery	Abington Middle School, enter on 2056 Susquehanna Road, Abington
June 28, 2025	Saturday	Bucks	Central Bucks South High School, 1100 Folly Road, Warrington
July 10, 2025	THURSDAY	Philadelphia	Streets Dept. Training Center, 8401 State Road at Ashburner Street, Philadelphia
August 9, 2025	Saturday	Bucks	Bucks County Technical School, 610 Wistar Road, Fairless Hills
August 23, 2025	Saturday	Chester	Oxford School District Administration Building, 125 Bell Tower Lane (Route 10), Oxford
September 6, 2025	Saturday	Delaware	Emergency Services Training Center, 1600 Calcon Hook Road, Sharon Hill
September 13, 2025	Saturday	Philadelphia	3rd District Highway Yard, 2121 W. York Street, Philadelphia
September 20, 2025	Saturday	Montgomery	Spring-Ford 9th Grade Center, 400 South Lewis Road, Royersford
October 5, 2025	SUNDAY	Chester	Downingtown Middle School, 115 Rock Raymond Road, Downingtown
October 11, 2025	Saturday	Delaware	Upper Chichester Township Municipal Building, 8500 Furey Road, Upper Chichester
October 11, 2025	Saturday	Philadelphia	Streets Dept. Facility, 3033 South 63rd Street–Northwest of Passyunk Avenue, Philadelphia
October 12, 2025	SUNDAY	Montgomery	Lower Merion Transfer Station, 1300 N. Woodbine Avenue, Penn Valley
October 25, 2025	Saturday	Bucks	Strayer Middle School, 1200 Ronald Reagan Drive, Quakertown, Richland Township
November 1, 2025	Saturday	Philadelphia	Streets Dept. NE Facility, 3901 N. Delaware Avenue, (Allegheny Exit of I-95), Philadelphia

For additional information:

Bucks County	215-345-3400	buckscounty.gov/recycling	Visit website for event hours
Chester County	484-796-4041	chestercountyswa.org	Visit website to preregister
Delaware County	610-892-9627	delcoswa.org	Visit website to preregister
Montgomery County	610-278-3618	MontcoPARecycles.org	Visit website to preregister
Philadelphia	215-686-8686	phila.gov/streets	Visit website for event hours

2025 SOUTHEASTERN PA REGIONAL HOUSEHOLD HAZARDOUS WASTE EVENTS

ACCEPTABLE MATERIALS

PAINT PRODUCTS	OUTDOOR PRODUCTS	AUTOMOTIVE PRODUCTS	HOUSEHOLD PRODUCTS	HOUSEHOLD OTHER
Turpentine	Swimming Pool Chemicals	Grease & Rust Solvents	Kerosene	Acids, Caustics, Solvents
Paint Thinners	Weed Killers	Fuel Additives	Rug Cleaners, Drain Openers	Flammables
Strippers & Removers	Septic Tank Degreasers	Carburetor Cleaners	Wood & Metal Cleaners	Oxidizers & Reactives
Oil-Based Paints	Asphalt Sealers	Transmission/Brake Fluid	Mothballs/Flakes	Aerosols
Stains, Varnish, Shellac	Roof Cements	Antifreeze	Adhesives/Solvents	Lead
Spray Paint	MINI Propane Tanks (No BBQ Tanks)	Car (lead-acid), Truck, Motorcycle & Marine Batteries	Rechargeable Batteries, Lithium, Ni-Cad, Button, Lead Acid	Mercury (Thermostats & Thermometers)
Solvent-Based Paint Products	Pesticide	Gas, Oil, Gas/Oil Mixture	Spot Removers, Dry Cleaning Fluid	Fluorescent Tubes & CFLs
Wallpaper Cement	Chemical Fertilizer	Road Flares (No Marine Flares)	Fire Extinguishers	Ballast (must be removed from light fixture)

UNACCEPTABLE MATERIALS

Explosives, Ammunition, Marine Flares	Electronics	Asbestos	Appliances/White Goods
Infectious or Medical Waste	Prescription Drugs	Radioactive Waste	Refrigerants, Freon Appliances
Tires	20 Lb. BBQ Propane Tanks/ Helium Tanks	Unidentified Waste	25- or 50- Gallon Drums
Latex Paint* (Water-Based)	Gas Cylinders	Alkaline Batteries (Trash)	Smoke Detectors

* Take off lid, dry out paint, discard can without lid; or pour paint into plastic bag with absorbent material (clay based kitty litter, saw dust, rags) place bag and can without lid, in trash. Paint hardener can also be purchased at hardware stores.

DROP OFF GUIDELINES

- NO TVs, electronics, or appliances will be accepted.
- Event workers will unload your materials so please remain in your vehicle.
- BUSINESSES AND CONTRACTORS WILL BE TURNED AWAY, no commercial/industrial waste accepted.
- Bring all substances in original containers with labels. Items must be identifiable. Do not mix materials.
- Gas containers returned upon request. Please attached a note to your container if you want it back.
- Tighten lids on all containers. If containers are leaking, pack in larger container with newspaper to soak up leaks.
- Maximum amount accepted per vehicle is 25 gallons total volume or 220 pounds total weight.
- No 25- or 50-gallon drums. 5-gallon buckets are the largest container accepted.
- There are no permanent drop off locations in the region for household hazardous waste, only the listed collections.